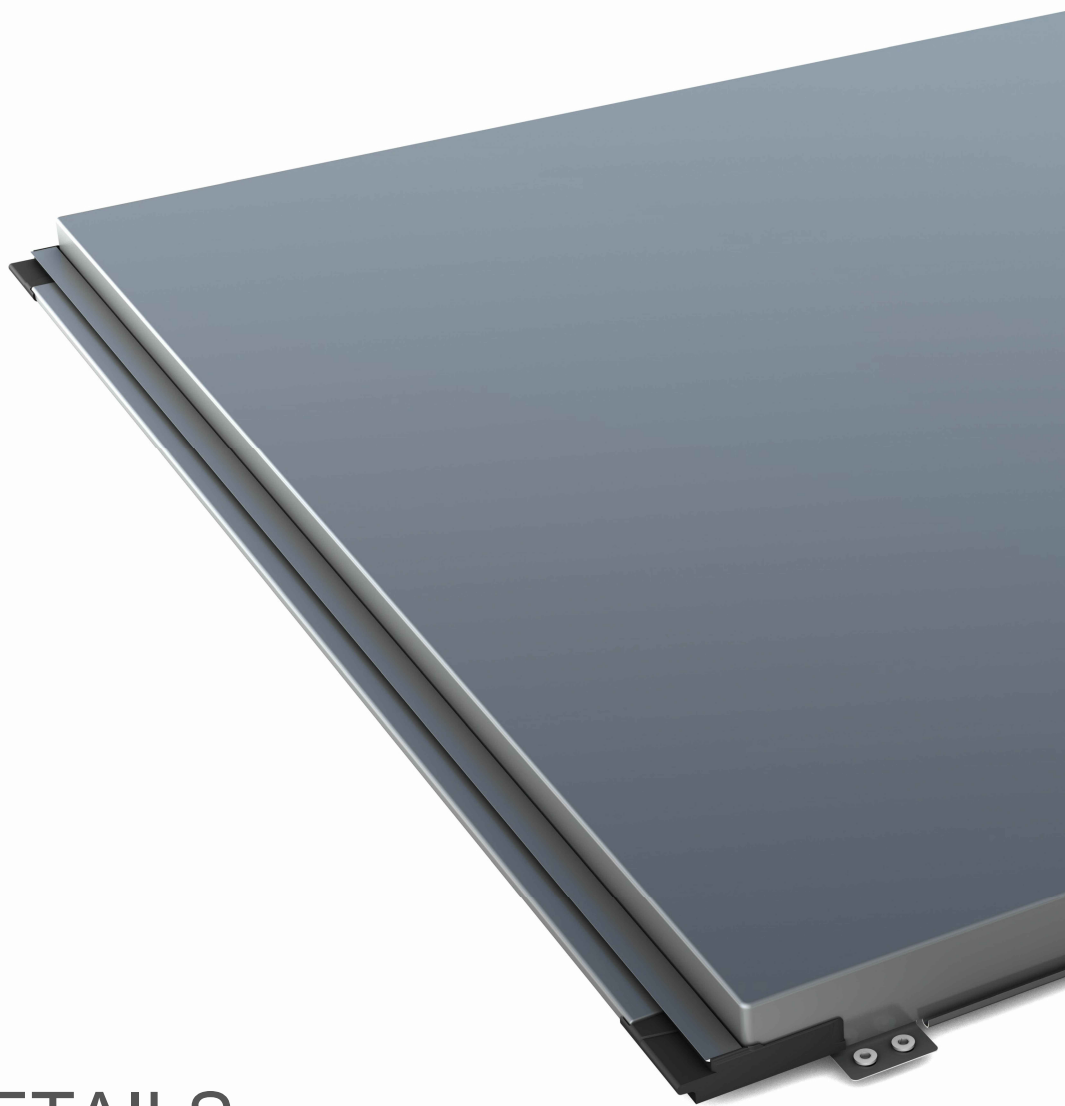


TRI MO QBISS SCREEN

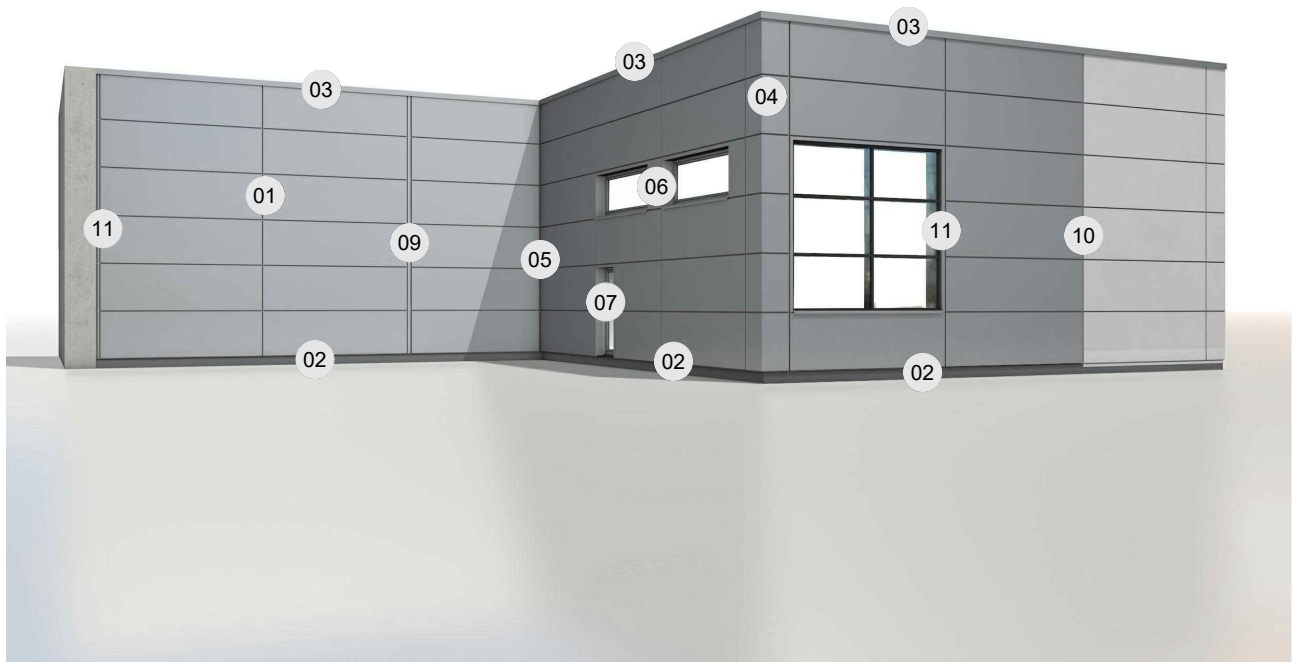


DESIGN DETAILS
QBISS SCREEN H+

HORIZONTAL
INSTALLATION

**QBISS
SCREEN H+**

- QSH+-H-01 JOINT
- QSH+-H-02 BASE
- QSH+-H-03 PARAPET
- QSH+-H-04 EXTERNAL CORNER
- QSH+-H-05 INTERNAL CORNER
- QSH+-H-06 WINDOW
- QSH+-H-07 DOOR
- QSH+-H-09 DILATATION
- QSH+-H-10 TRIMO SYSTEM CONNECTION
- QSH+-H-11 OTHER SYSTEM CONNECTION



HORIZONTAL
INSTALLATIONQBISS
SCREEN H+

NOTES

- Subject of details are only positioned elements, except where indicated separately!
- For items, that are not in the supply of Trimo d.o.o., Trimo d.o.o. is not responsible!
- Used materials must comply with the local regulations in force.
- All components must be used and installed in accordance with manufacturer's instructions.
- Substructure to be determined in accordance with the requirements of the project.
- Substructure must comply with structural analysis.
- In details, the substructure is only schematic.
- The system appropriate for substructure within ± 2 mm tolerance!
- Statical calculation for fixing screws quantity to be done!
- In case of a connection of materials with different electric potentials, use a relevant isolator.
- The material of the flashings has the default properties of the outer sheet of the façade element.
- Fire and lightning protection must comply with the local regulations in force.

VENTILATION GAP

- Minimal cross section of unhindered air gap according to country is:
 - general: $5 \text{ cm}^2/\text{m}$ for unventilated facades (EN ISO 6946:2008),
 - general: $5 - 15 \text{ cm}^2/\text{m}$ for partially ventilated facades (EN ISO 6946:2008),
 - general: $> 15 \text{ cm}^2/\text{m}$ for fully ventilated facades (EN ISO 6946:2008),
 - Germany: $5 - 10 \text{ mm}$ /cross section or $50 - 100 \text{ cm}^2/\text{m}$ ali $5-10\%$ gap cross section (DIN 18516:1999),
 - Austria: min. 15 mm /cross section or $150 \text{ cm}^2/\text{m}$ or 15% gap cross section (ONORM B 2219),
 - Great Britain: $> 5 \text{ cm}^2/\text{m}$ (BS 5250:2002) ori
 - Great Britain: 50 mm for open gaps and 38 mm for overlap or labyrinth joints (Part 6, Ch 6.5, NHBC)
 - other: 25 mm for closed systems and 50 mm for traditional ventilated facades with finish layer (TRADA).
- Minimal intake and release opening in air gap as is the the case for gap in the fire barrier detail is:
 - min. $50 \text{ cm}^2/\text{m}$ equalling $5 \text{ mm}/\text{m}$ opening.
 - According to VHF directives the air gap is specified at $5 - 10 \text{ mm}/\text{m}$.
 - According to austrian norm the gap is minimum $150 \text{ cm}^2/\text{m}$ or $15 \text{ mm}/\text{m}$.

GENERAL NOTES

Trimo Group holds full copyrights on the information and details provided on this media, therefore any unauthorized reproduction and distribution is strictly prohibited.

**HORIZONTAL
INSTALLATION**

**QBISS
SCREEN H+**

JOINT TYPE

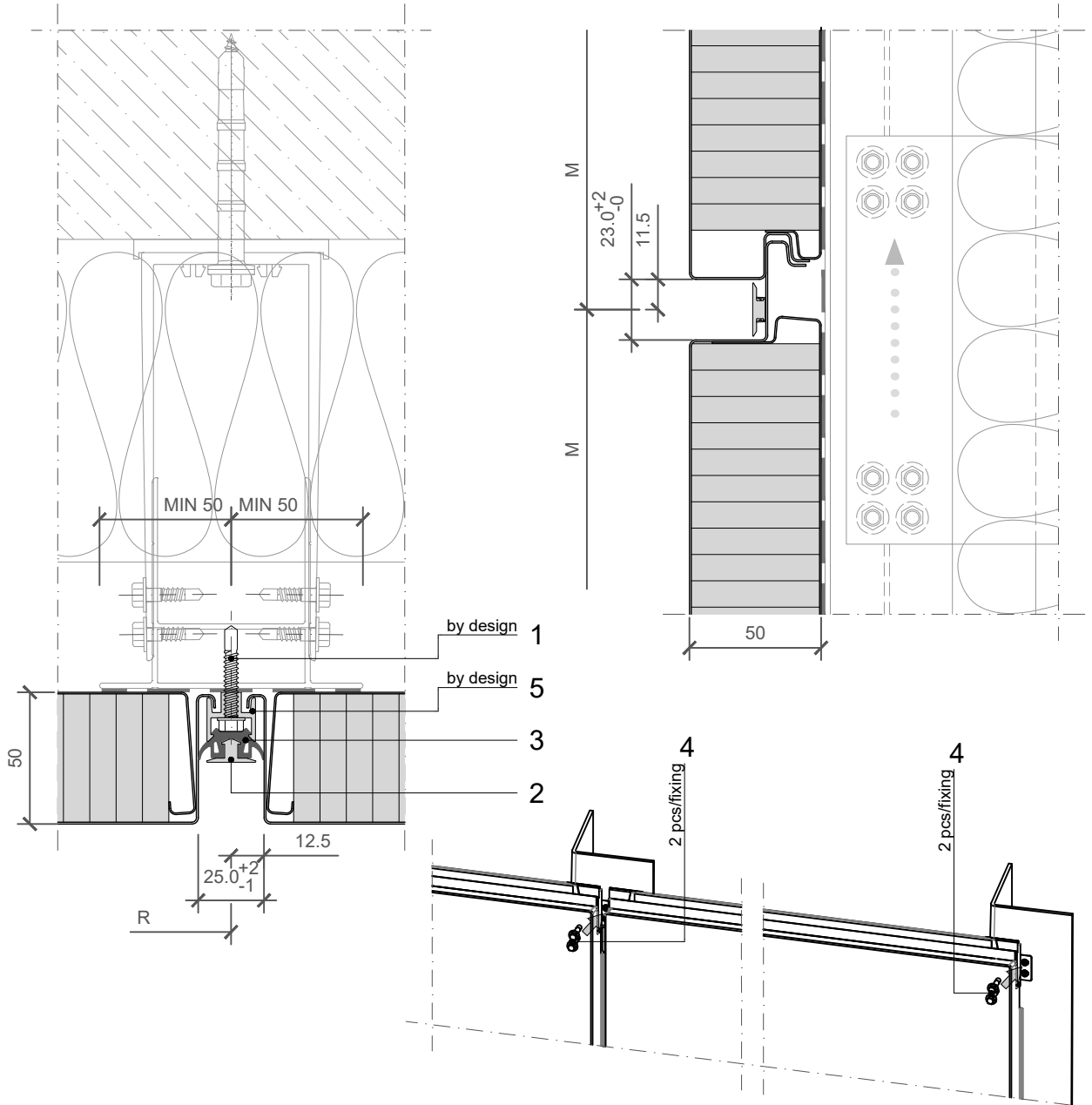
- B - B ○ BF - BF
- B - BF ○ F - B
- BF - B ○ F - BF

BUILDING APPLICATION

- External Facade ○ External Soffit
- Internal Wall ○ Internal Ceiling

HORIZONTAL CUT

VERTICAL CUT



POS.	CODE	ELEMENTS	SCALE: M 1:2.5
1	P039	Fixing screw - The type of screw depends on the material of the substructure (wind load)	
2	A162	Decorative profile HF 64 - recessed look of transversal joint	
3	T121	Transversal gasket	
4	P038	Fixing screw - The type of screw depends on the material of the substructure (self weight load)	
5	A161	Load bearing fixing element HF 63 (wind load)	

JOINT

Trimo Group holds full copyrights on the information and details provided on this media, therefore any unauthorized reproduction and distribution is strictly prohibited.

**HORIZONTAL
INSTALLATION**

**QBISS
SCREEN H+**

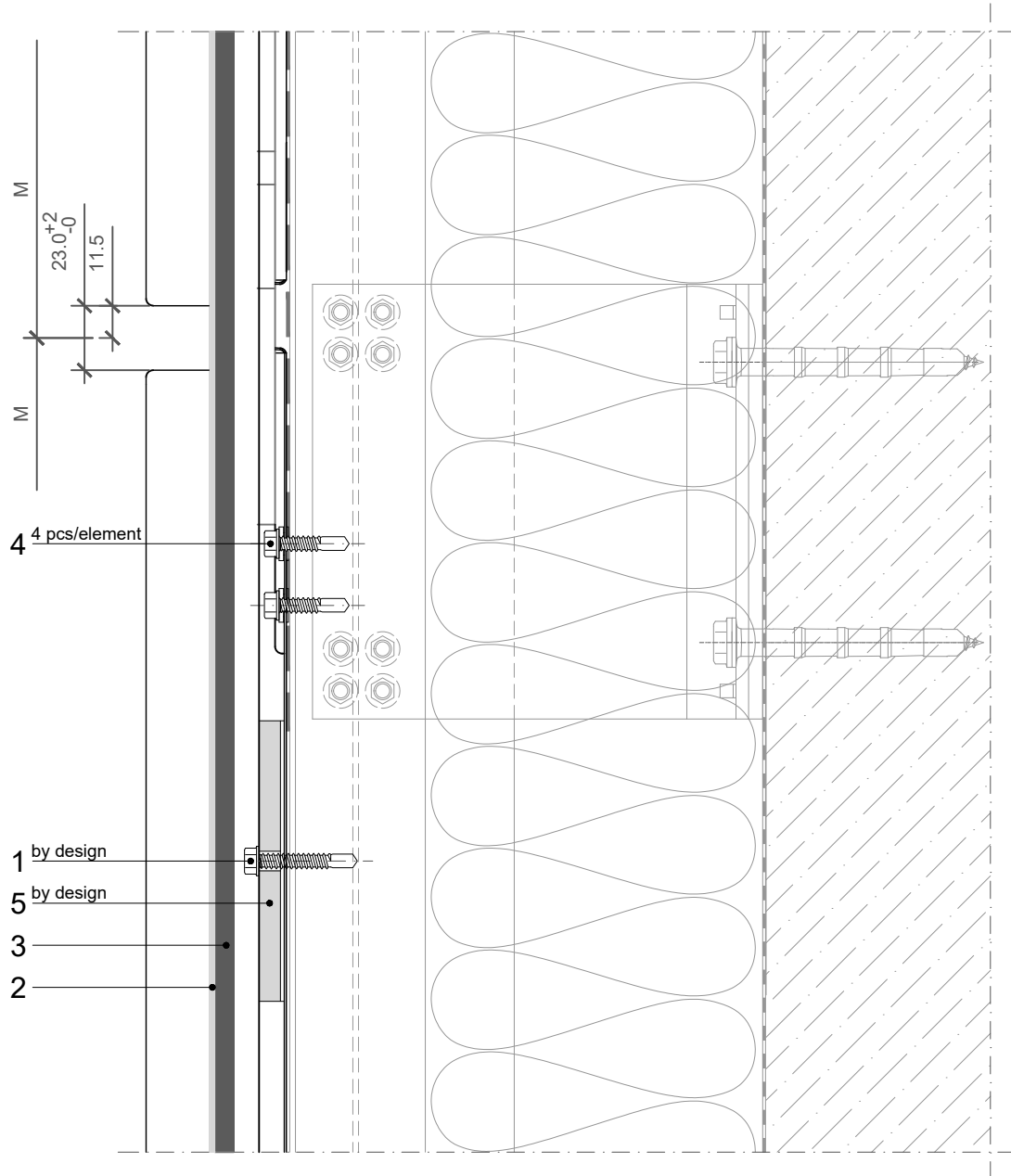
JOINT TYPE

- B - B ○ BF - BF
- B - BF ○ F - B
- BF - B ○ F - BF

BUILDING APPLICATION

- External Facade ○ External Soffit
- Internal Wall ○ Internal Ceiling

VERTICAL CUT



POS.	CODE	ELEMENTS	SCALE: M 1:2.5
1	P039	Fixing screw - The type of screw depends on the material of the substructure (wind load)	
2	A162	Decorative profile HF 64 - recessed look of transversal joint	
3	T121	Transversal gasket	
4	P038	Fixing screw - The type of screw depends on the material of the substructure (self weight load)	
5	A161	Load bearing fixing element HF 63 (wind load)	

JOINT

Trimo Group holds full copyrights on the information and details provided on this media, therefore any unauthorized reproduction and distribution is strictly prohibited.

**HORIZONTAL
INSTALLATION**

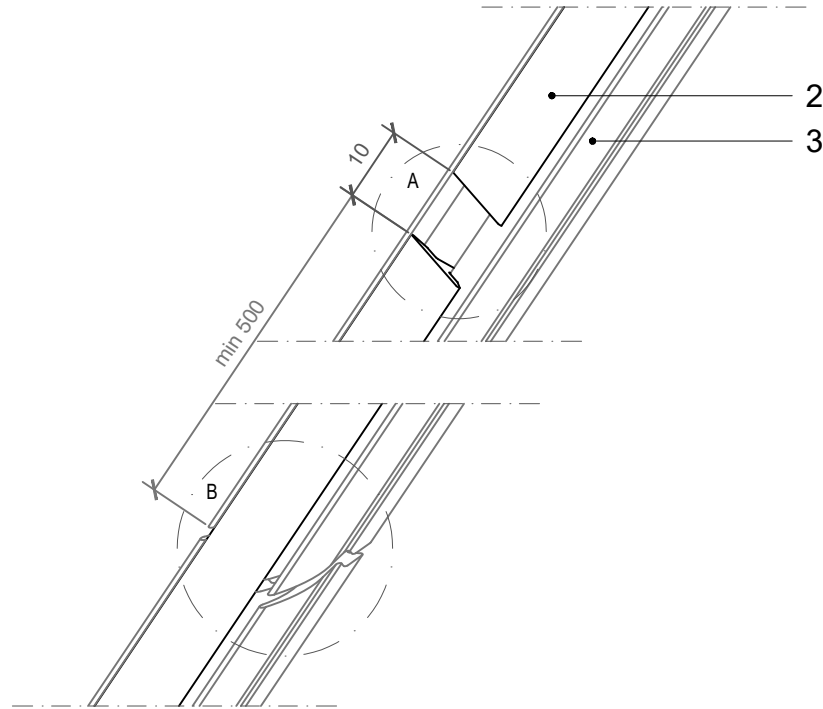
**QBISS
SCREEN H+**

JOINT TYPE

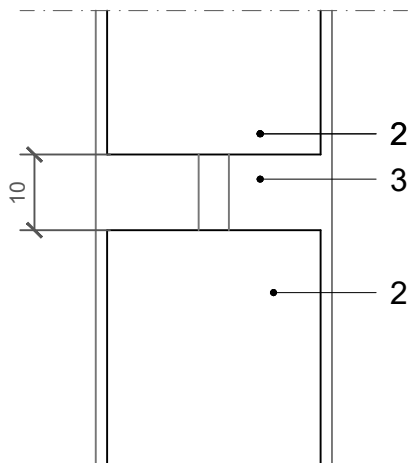
- B - B ○ BF - BF
- B - BF ○ F - B
- BF - B ○ F - BF

BUILDING APPLICATION

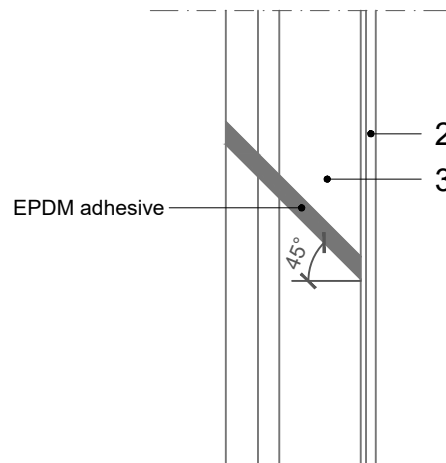
- External Facade ○ External Soffit
- Internal Wall ○ Internal Ceiling



Detail A



Detail B



NOTES

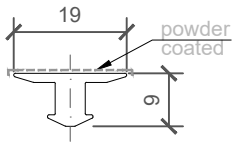
- 2_ELEMENT_A162_Decorative profile HF 64 - joint
- 3_ELEMENT_T121_Transversal gasket - joint

POS.	CODE	ELEMENTS
2	A162	Decorative profile HF 64 - recessed look of transversal joint
3	T121	Transversal gasket

JOINT

Trimo Group holds full copyrights on the information and details provided on this media, therefore any unauthorized reproduction and distribution is strictly prohibited.

2_ELEMENT_A162_Decorative profile HF 64

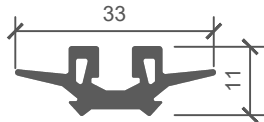


COLOUR	----
LENGHT_1	----
PIECES_1	----
LENGHT_2	----
PIECES_2	----

NOTES

material: EN AW-6061
Lmax = 4000 mm (6000 mm)

3_ELEMENT_T121_Transversal gasket

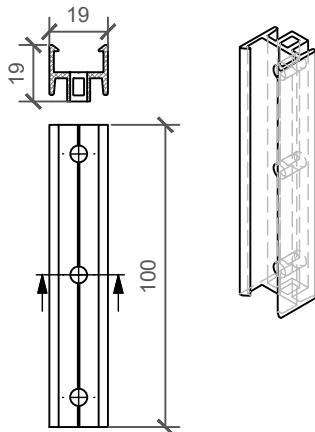


LENGHT_1	----
PIECES_1	----
LENGHT_2	----
PIECES_2	----

NOTES

material: EPDM

5_ELEMENT_A161_Load bearing fixing element HF 63 (wind load)



PIECES	----
---------------	------

NOTES

material: EN AW-6063 T66
L= 100 mm

**HORIZONTAL
INSTALLATION**

**QBISS
SCREEN H+**

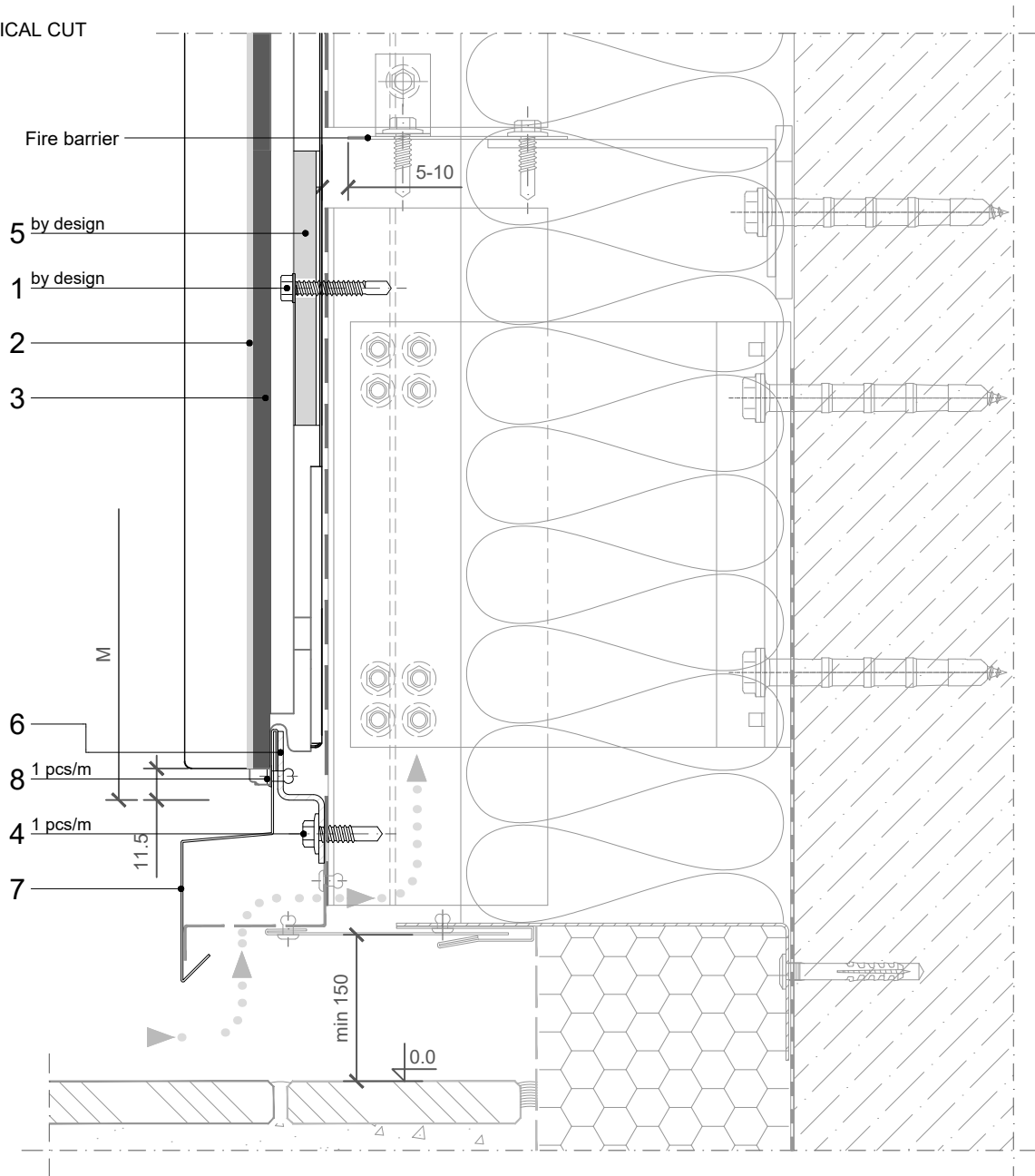
JOINT TYPE

- B - B ○ BF - BF
- B - BF ○ F - B
- BF - B ○ F - BF

BUILDING APPLICATION

- External Facade ○ External Soffit
- Internal Wall ○ Internal Ceiling

VERTICAL CUT



POS.	CODE	ELEMENTS	SCALE: M 1:2.5
1	P039	Fixing screw - The type of screw depends on the material of the substructure (wind load)	
2	A162	Decorative profile HF 64 - recessed look of transversal joint	
3	T121	Transversal gasket	
4	P038	Fixing screw - The type of screw depends on the material of the substructure	
5	A161	Load bearing fixing element HF 63 (wind load)	
6	N1273	Cladding element holder 2x25x17x25	
7	O1041	Drip flashing	
8	K002	Blind rivet 4x10	

BASE

Trimo Group holds full copyrights on the information and details provided on this media, therefore any unauthorized reproduction and distribution is strictly prohibited.

HORIZONTAL INSTALLATION

JOINT TYPE

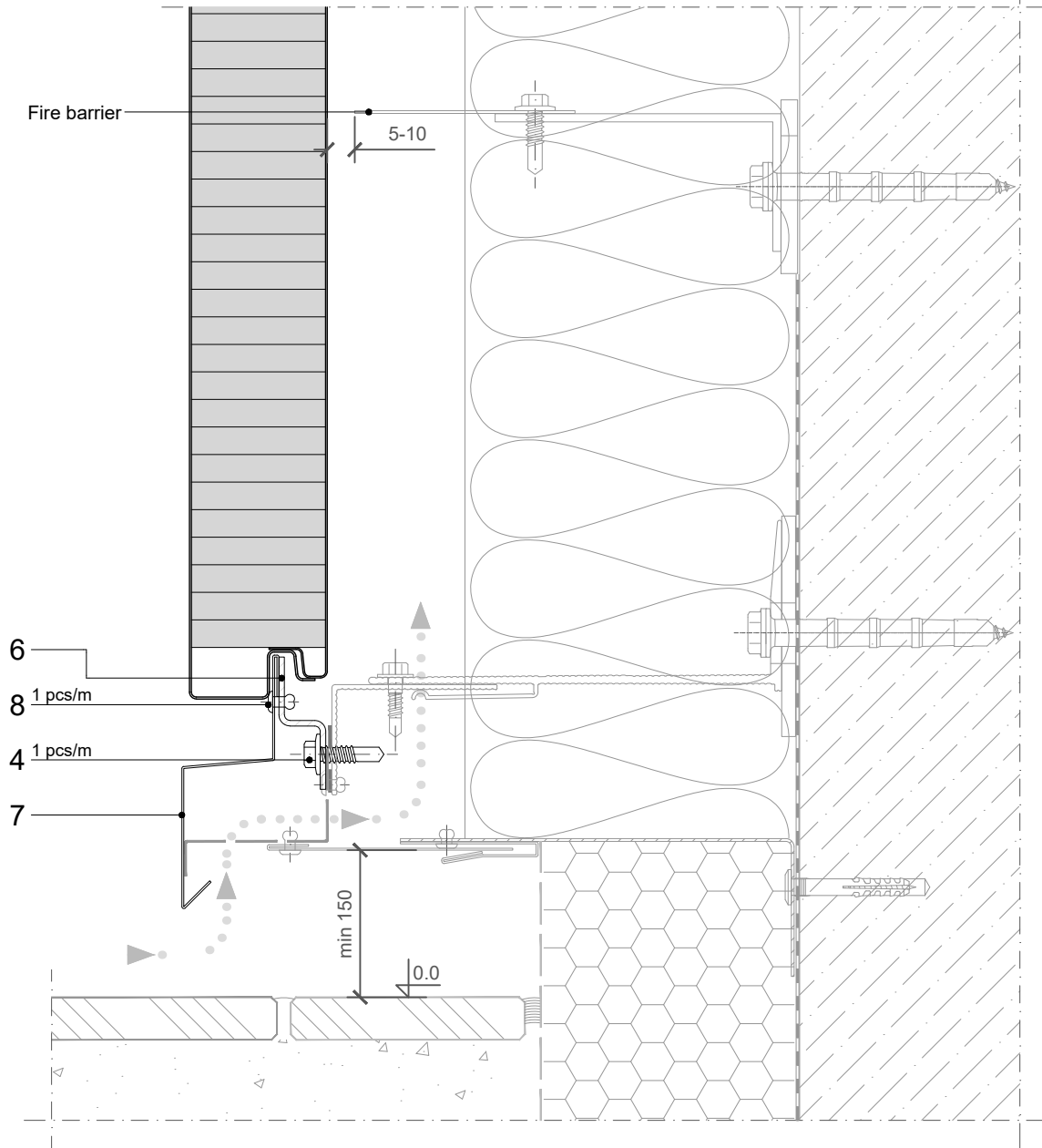
- B - B ○ BF - BF
- B - BF ○ F - B
- BF - B ○ F - BF

BUILDING APPLICATION

- External Facade ○ External Soffit
- Internal Wall ○ Internal Ceiling

QBISS SCREEN H+

VERTICAL CUT



POS.	CODE	ELEMENTS	SCALE: M 1:2.5
4	P038	Fixing screw - The type of screw depends on the material of the substructure	
6	N1273	Cladding element holder 2x25x17x25	
7	O1041	Drip flashing	
8	K002	Blind rivet 4x10	

BASE

Trimo Group holds full copyrights on the information and details provided on this media, therefore any unauthorized reproduction and distribution is strictly prohibited.

**HORIZONTAL
INSTALLATION**

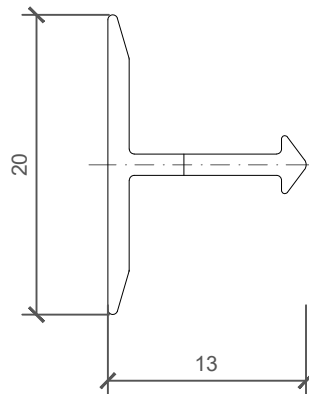
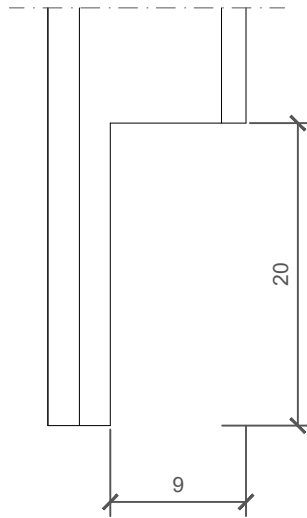
**QBISS
SCREEN H+**

JOINT TYPE

- B - B BF - BF
- B - BF F - B
- BF - B F - BF

BUILDING APPLICATION

- External Facade External Soffit
- Internal Wall Internal Ceiling



NOTES

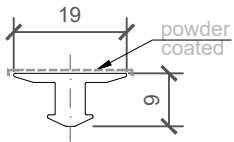
- 2_ELEMENT_A162_Decorative profile HF 64 - mechanical treatment

SCALE: M 2:1

BASE

Trimo Group holds full copyrights on the information and details provided on this media, therefore any unauthorized reproduction and distribution is strictly prohibited.

2_ELEMENT_A162_Decorative profile HF 64

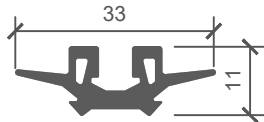


COLOUR	----
LENGHT_1	----
PIECES_1	----
LENGHT_2	----
PIECES_2	----

NOTES

material: EN AW-6061
Lmax = 4000 mm (6000 mm)

3_ELEMENT_T121_Transversal gasket

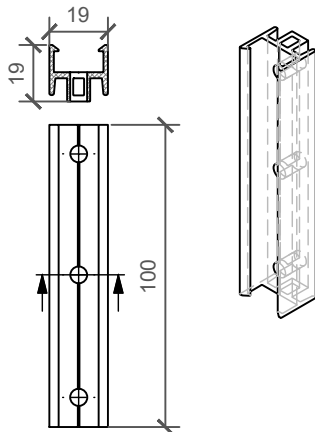


LENGHT_1	----
PIECES_1	----
LENGHT_2	----
PIECES_2	----

NOTES

material: EPDM

5_ELEMENT_A161_Load bearing fixing element HF 63 (wind load)

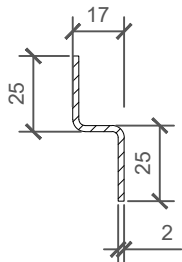


PIECES	----
--------	------

NOTES

material: EN AW-6063 T66
L= 100 mm

6_ELEMENT_N1273_Cladding element holder 2x25x17x25

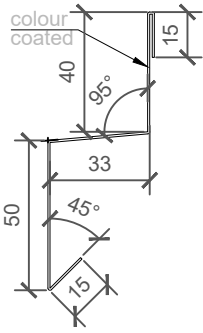


LENGHT_1	----
PIECES_1	----
LENGHT_2	----
PIECES_2	----

NOTES

material: Zinc - coated metal sheet (2 mm) / option: Stainless steel (2 mm)
sheet width: 59 mm

7_ELEMENT_O1401_Drip flashing



COLOUR	----
LENGHT_1	----
PIECES_1	----
LENGHT_2	----
PIECES_2	----

NOTES

material: Colored metal sheet (0,7 mm)
 sheet width: 153 mm
 Lmax = 6000 mm

**HORIZONTAL
INSTALLATION**

JOINT TYPE

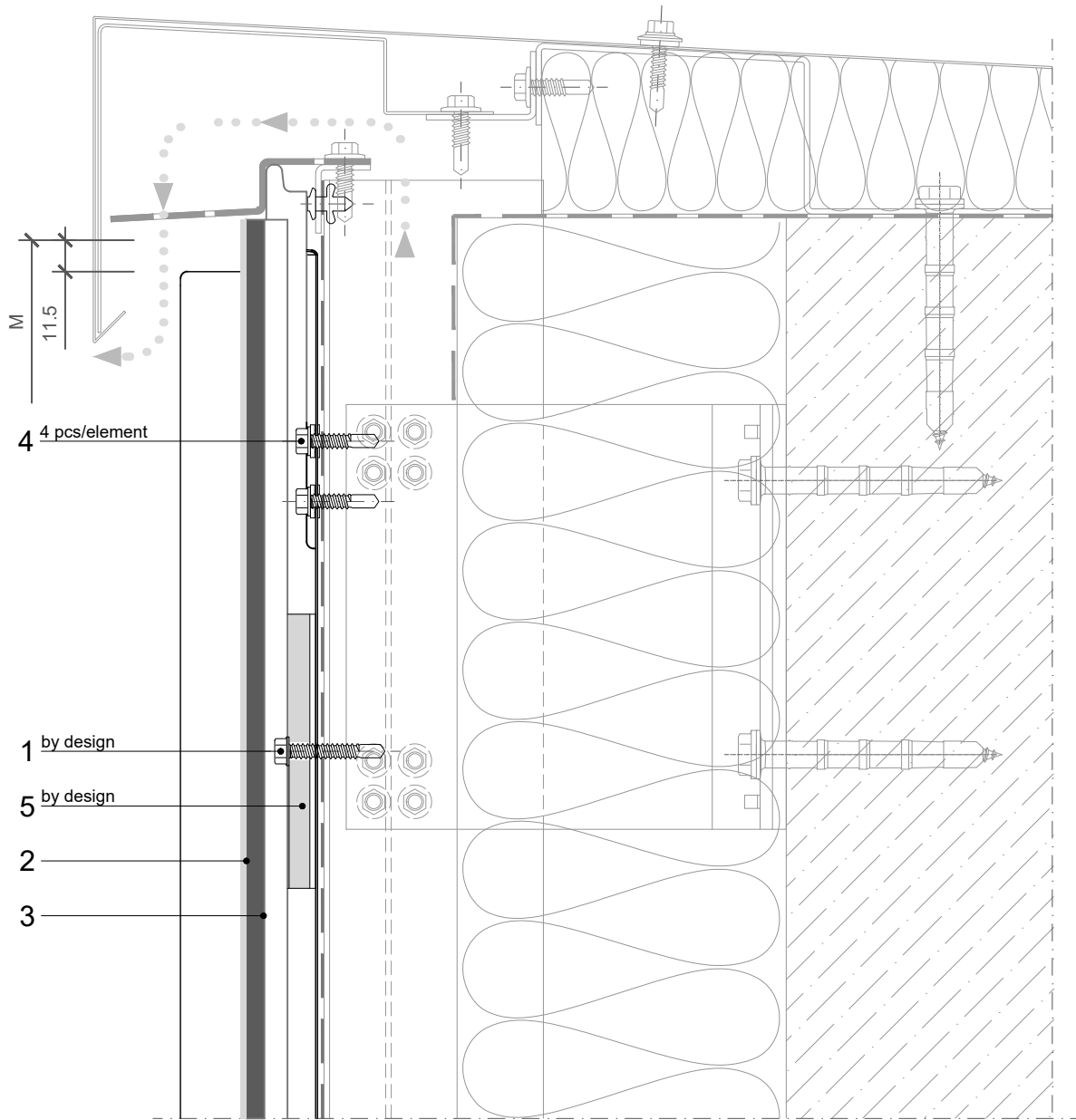
- B - B ○ BF - BF
- B - BF ○ F - B
- BF - B ○ F - BF

BUILDING APPLICATION

- External Facade ○ External Soffit
- Internal Wall ○ Internal Ceiling

**QBISS
SCREEN H+**

VERTICAL CUT



POS.	CODE	ELEMENTS	SCALE: M 1:2.5
1	P039	Fixing screw - The type of screw depends on the material of the substructure (wind load)	
2	A162	Decorative profile HF 64 - recessed look of transversal joint	
3	T121	Transversal gasket	
4	P038	Fixing screw - The type of screw depends on the material of the substructure (self weight load)	
5	A161	Load bearing fixing element HF 63 (wind load)	

**HORIZONTAL
INSTALLATION**

**QBISS
SCREEN H+**

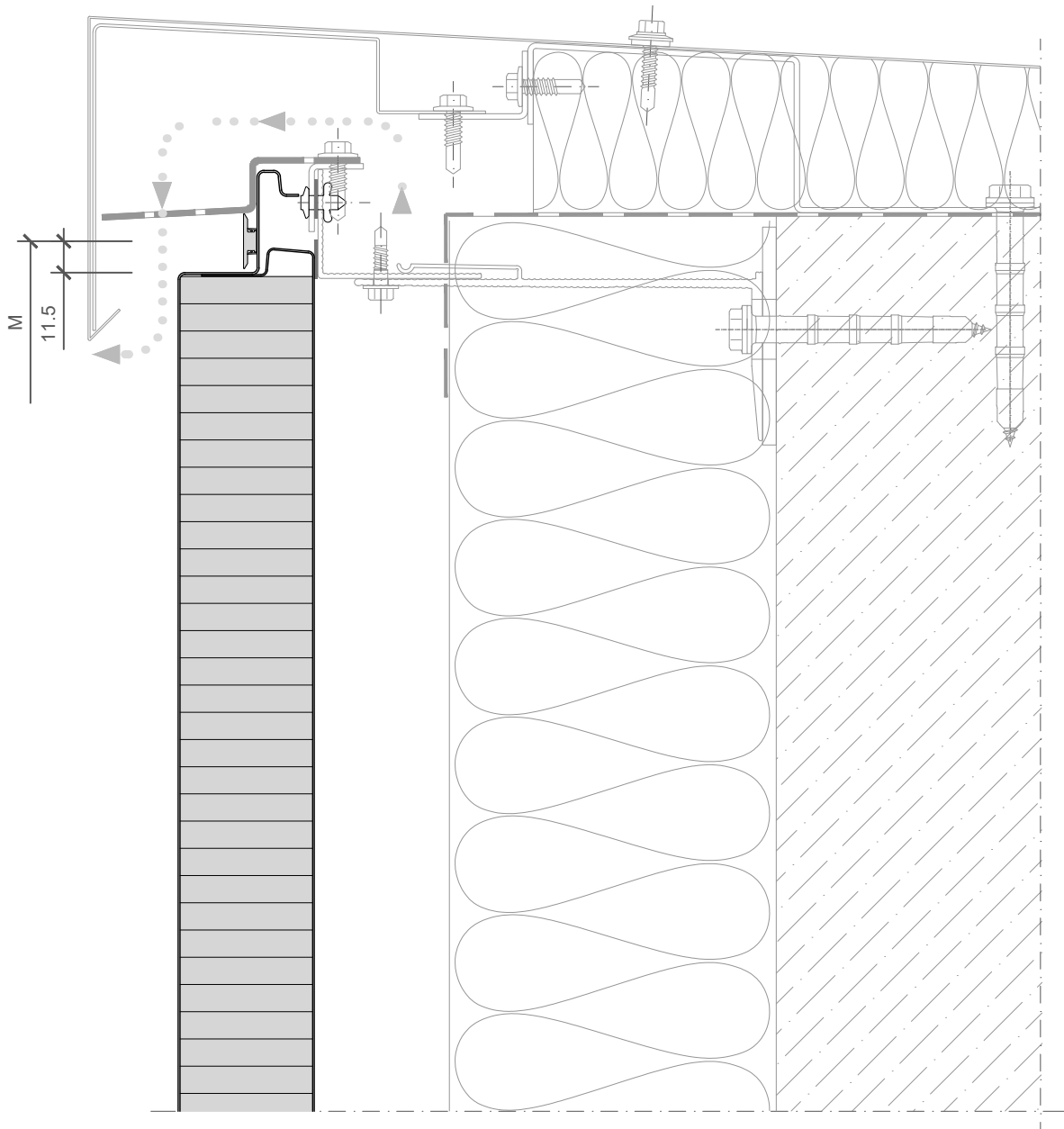
JOINT TYPE

- B - B ○ BF - BF
- B - BF ○ F - B
- BF - B ○ F - BF

BUILDING APPLICATION

- External Facade ○ External Soffit
- Internal Wall ○ Internal Ceiling

VERTICAL CUT



SCALE: M 1:2.5

**HORIZONTAL
INSTALLATION**

JOINT TYPE

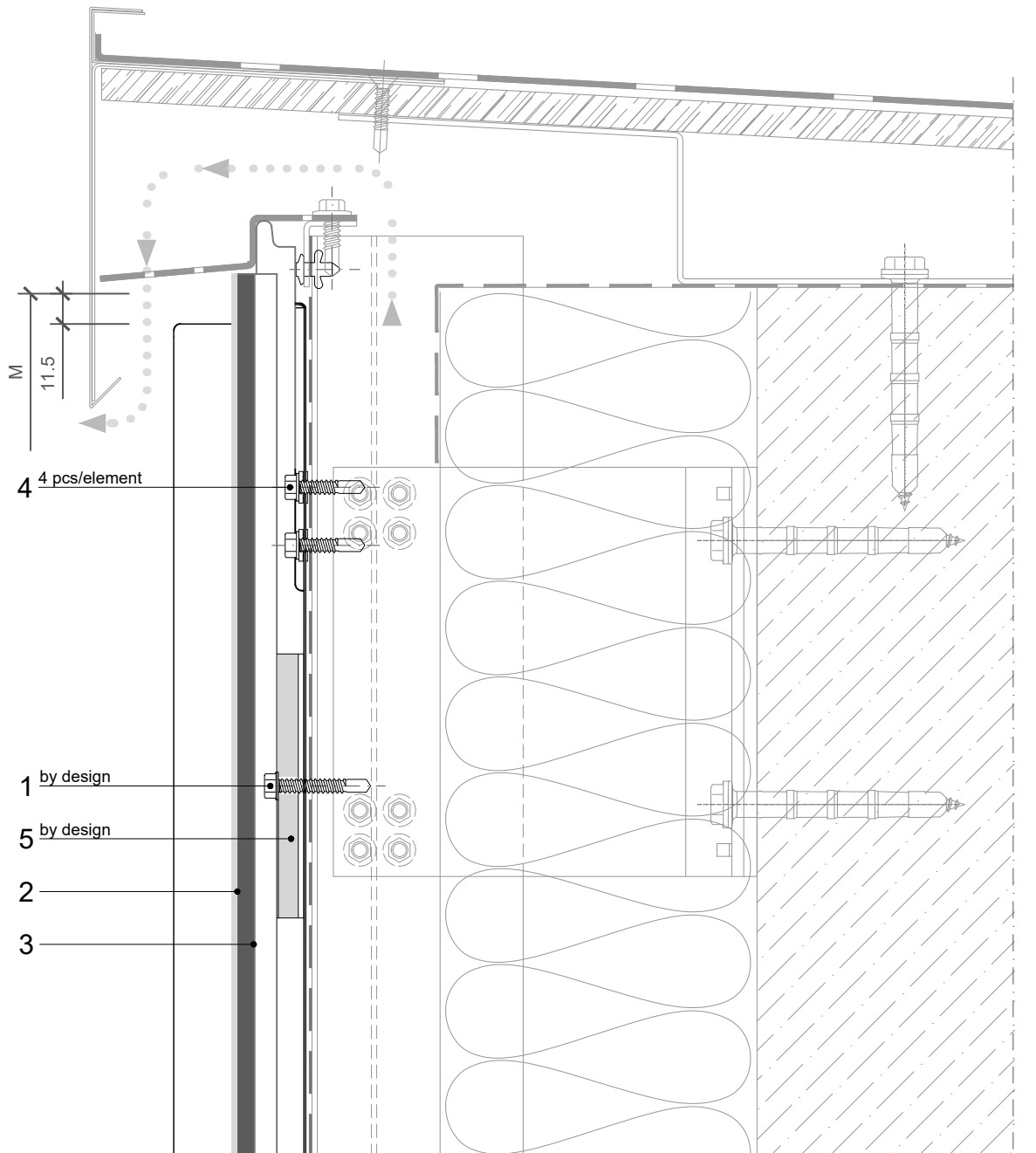
- B - B ○ BF - BF
- B - BF ○ F - B
- BF - B ○ F - BF

BUILDING APPLICATION

- External Facade ○ External Soffit
- Internal Wall ○ Internal Ceiling

**QBISS
SCREEN H+**

VERTICAL CUT



POS.	CODE	ELEMENTS	SCALE: M 1:2.5
1	P039	Fixing screw - The type of screw depends on the material of the substructure (wind load)	
2	A162	Decorative profile HF 64 - recessed look of transversal joint	
3	T121	Transversal gasket	
4	P038	Fixing screw - The type of screw depends on the material of the substructure (self weight load)	
5	A161	Load bearing fixing element HF 63 (wind load)	

**HORIZONTAL
INSTALLATION**

**QBISS
SCREEN H+**

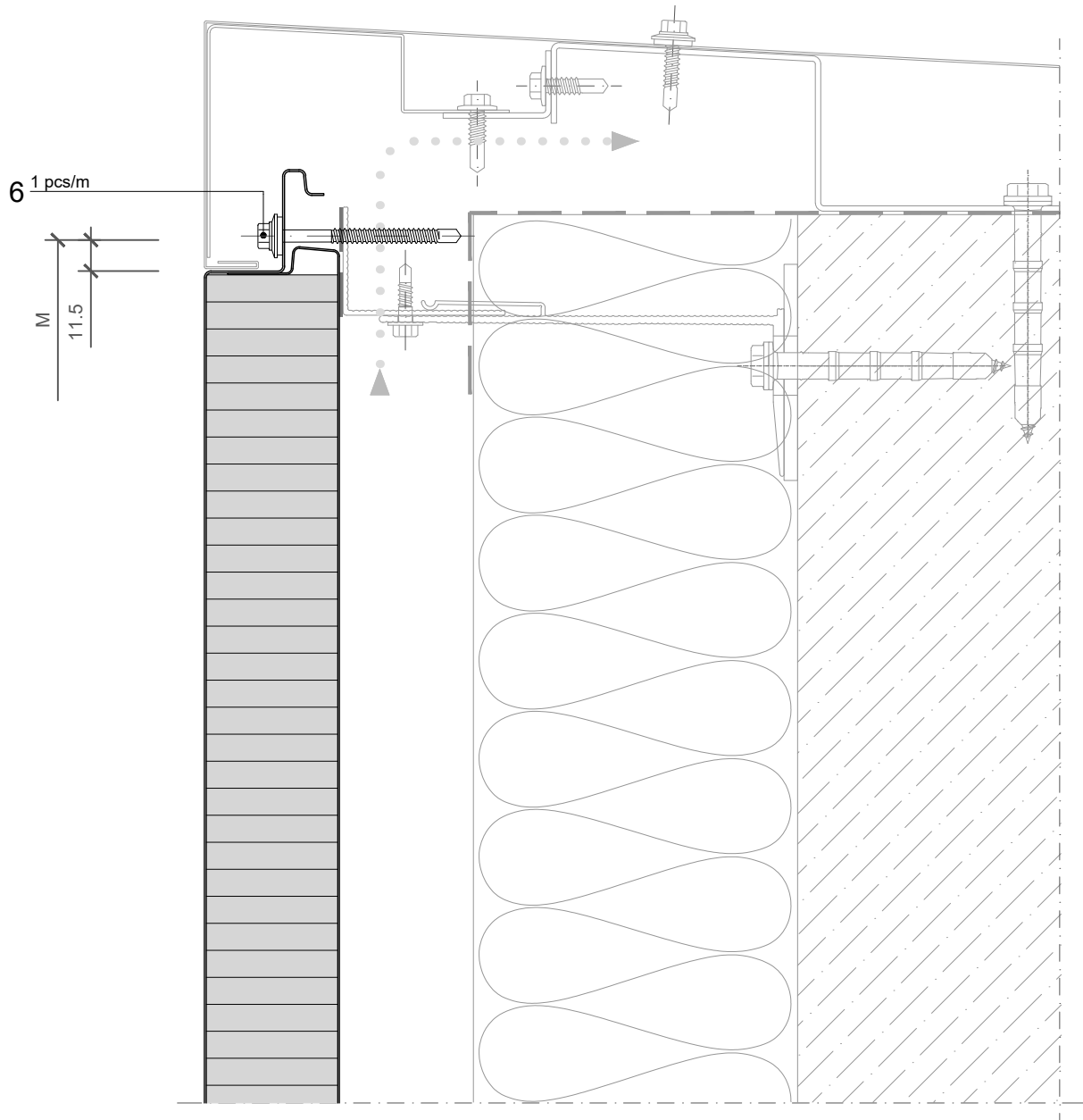
JOINT TYPE

- B - B ○ BF - BF
- B - BF ○ F - B
- BF - B ○ F - BF

BUILDING APPLICATION

- External Facade ○ External Soffit
- Internal Wall ○ Internal Ceiling

VERTICAL CUT

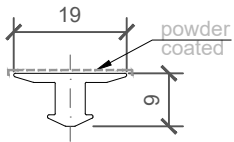


VERSION: 1 20. 07. 2019 I

POS.	CODE	ELEMENTS
6	P052	Fixing screw - The type of screw depends on the material of the substructure

SCALE: M 1:2.5

2_ELEMENT_A162_Decorative profile HF 64

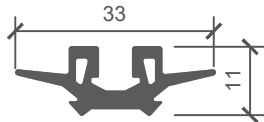


COLOUR	----
LENGHT_1	----
PIECES_1	----
LENGHT_2	----
PIECES_2	----

NOTES

material: EN AW-6061
Lmax = 4000 mm (6000 mm)

3_ELEMENT_T121_Transversal gasket

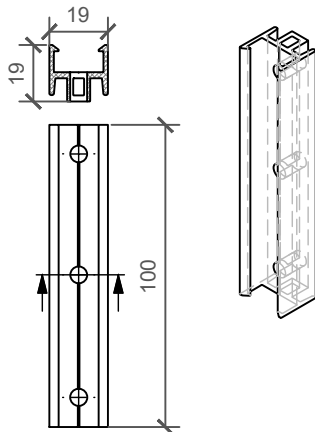


LENGHT_1	----
PIECES_1	----
LENGHT_2	----
PIECES_2	----

NOTES

material: EPDM

5_ELEMENT_A161_Load bearing fixing element HF 63 (wind load)



PIECES	----
---------------	------

NOTES

material: EN AW-6063 T66
L= 100 mm

**HORIZONTAL
INSTALLATION**

JOINT TYPE

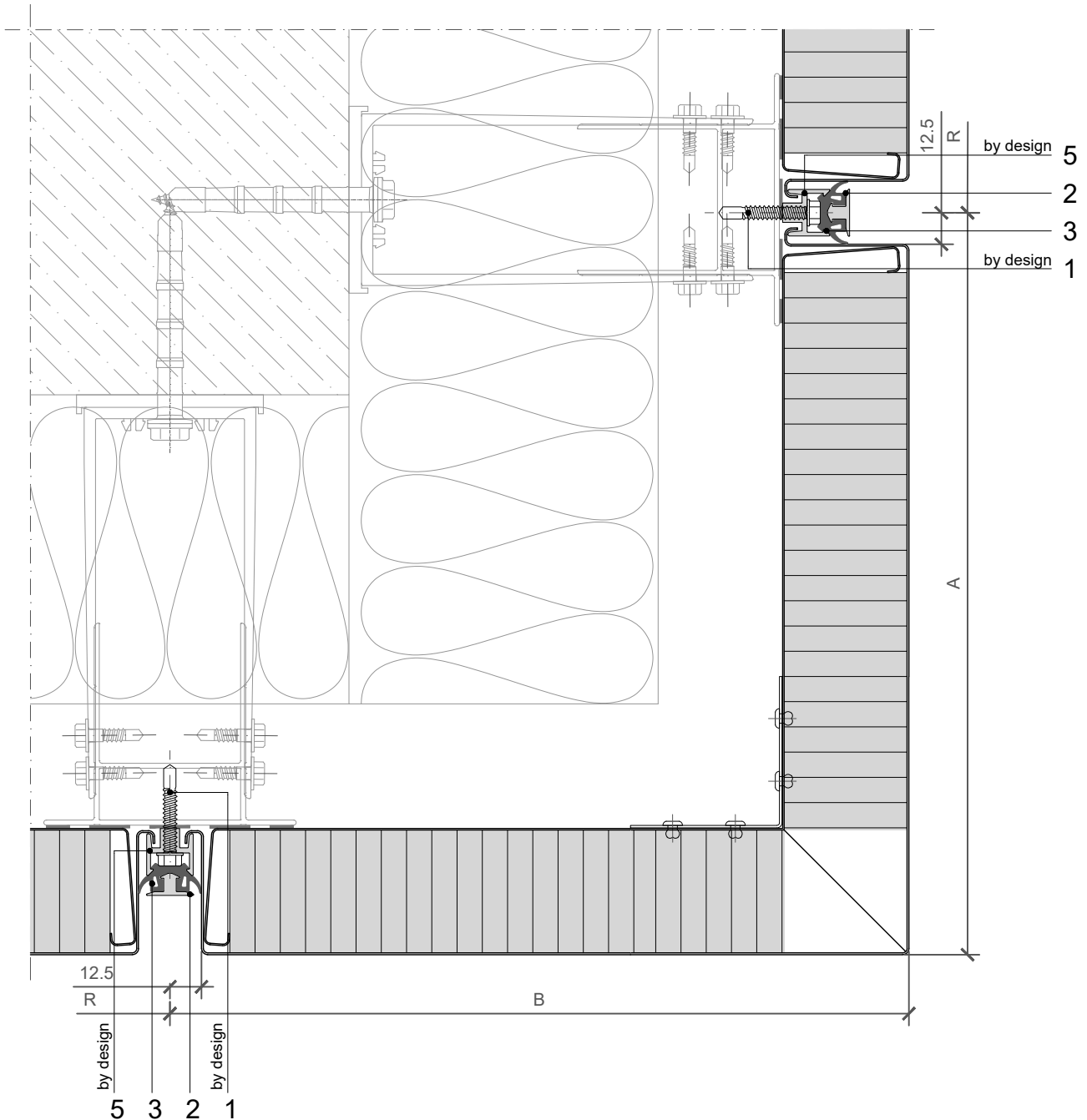
- B - B ○ BF - BF
- B - BF ○ F - B
- BF - B ○ F - BF

BUILDING APPLICATION

- External Facade ○ External Soffit
- Internal Wall ○ Internal Ceiling

**QBISS
SCREEN H+**

HORIZONTAL CUT



POS.	CODE	ELEMENTS	SCALE: M 1:2.5
1	P039	Fixing screw - The type of screw depends on the material of the substructure (wind load)	
2	A162	Decorative profile HF 64 - recessed look of transversal joint	
3	T121	Transversal gasket	
5	A161	Load bearing fixing element HF 63 (wind load)	

EXTERNAL CORNER

Trimo Group holds full copyrights on the information and details provided on this media, therefore any unauthorized reproduction and distribution is strictly prohibited.

**HORIZONTAL
INSTALLATION**

**QBISS
SCREEN H+**

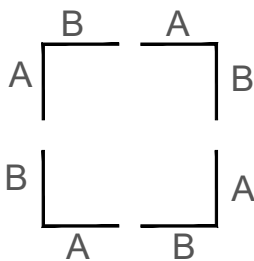
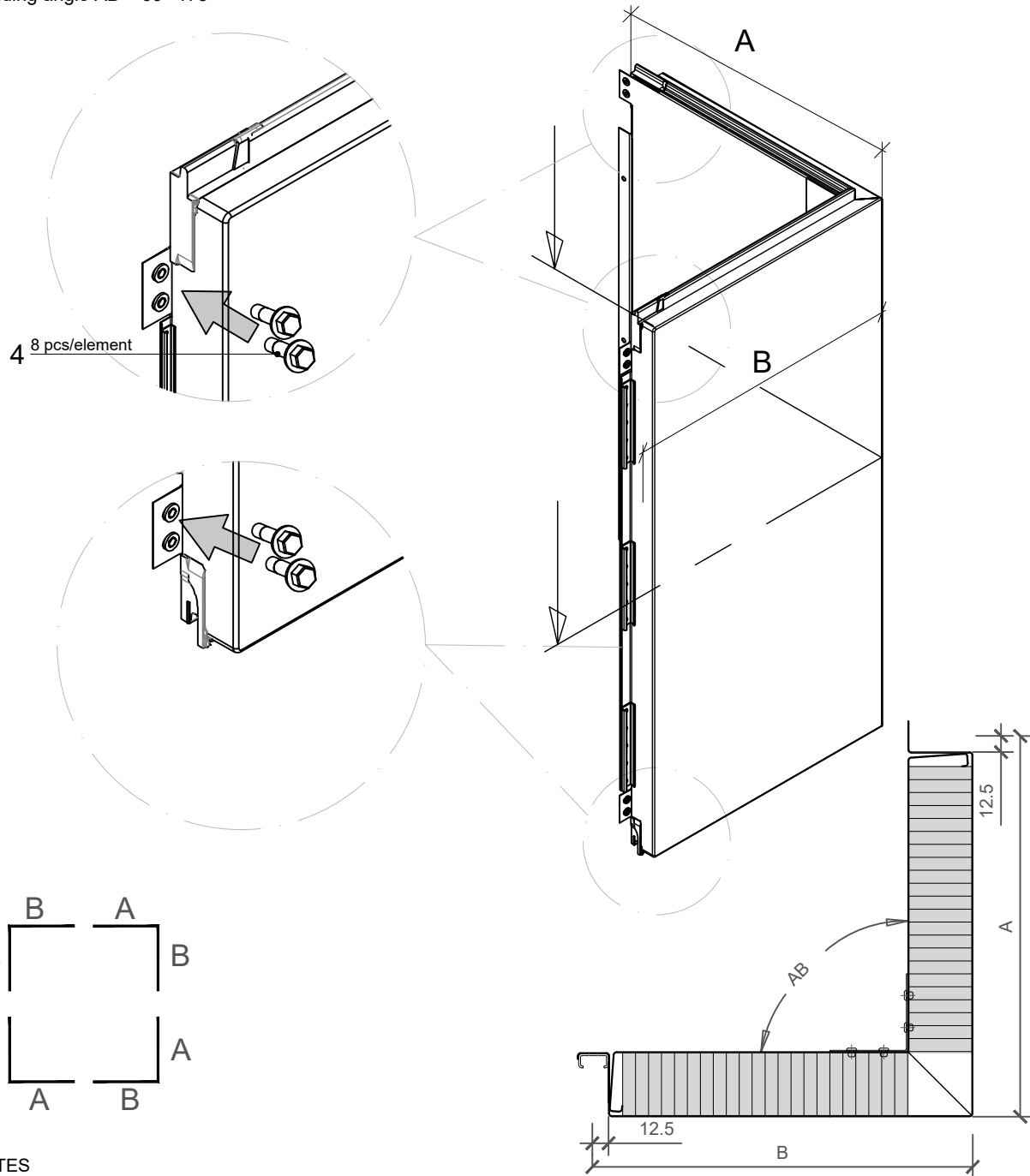
JOINT TYPE

- B - B ○ BF - BF
- B - BF ○ F - B
- BF - B ○ F - BF

BUILDING APPLICATION

- External Facade ○ External Soffit
- Internal Wall ○ Internal Ceiling

M = 600-1200mm
 A+B = R; Rmin = 550mm; Rmax = 2000mm
 Amin(Bmin) = 150mm
 Amax(Bmax) = 1000mm
 Bending angle AB = 60°-175°



NOTES

- Prefabricated external corner element
- Dimensions A and B must be adjusted to cladding and building tolerances

POS.	CODE	ELEMENTS
4	P038	Fixing screw - The type of screw depends on the material of the substructure (self weight load)

EXTERNAL CORNER

Trimo Group holds full copyrights on the information and details provided on this media, therefore any unauthorized reproduction and distribution is strictly prohibited.

**HORIZONTAL
INSTALLATION**

**QBISS
SCREEN H+**

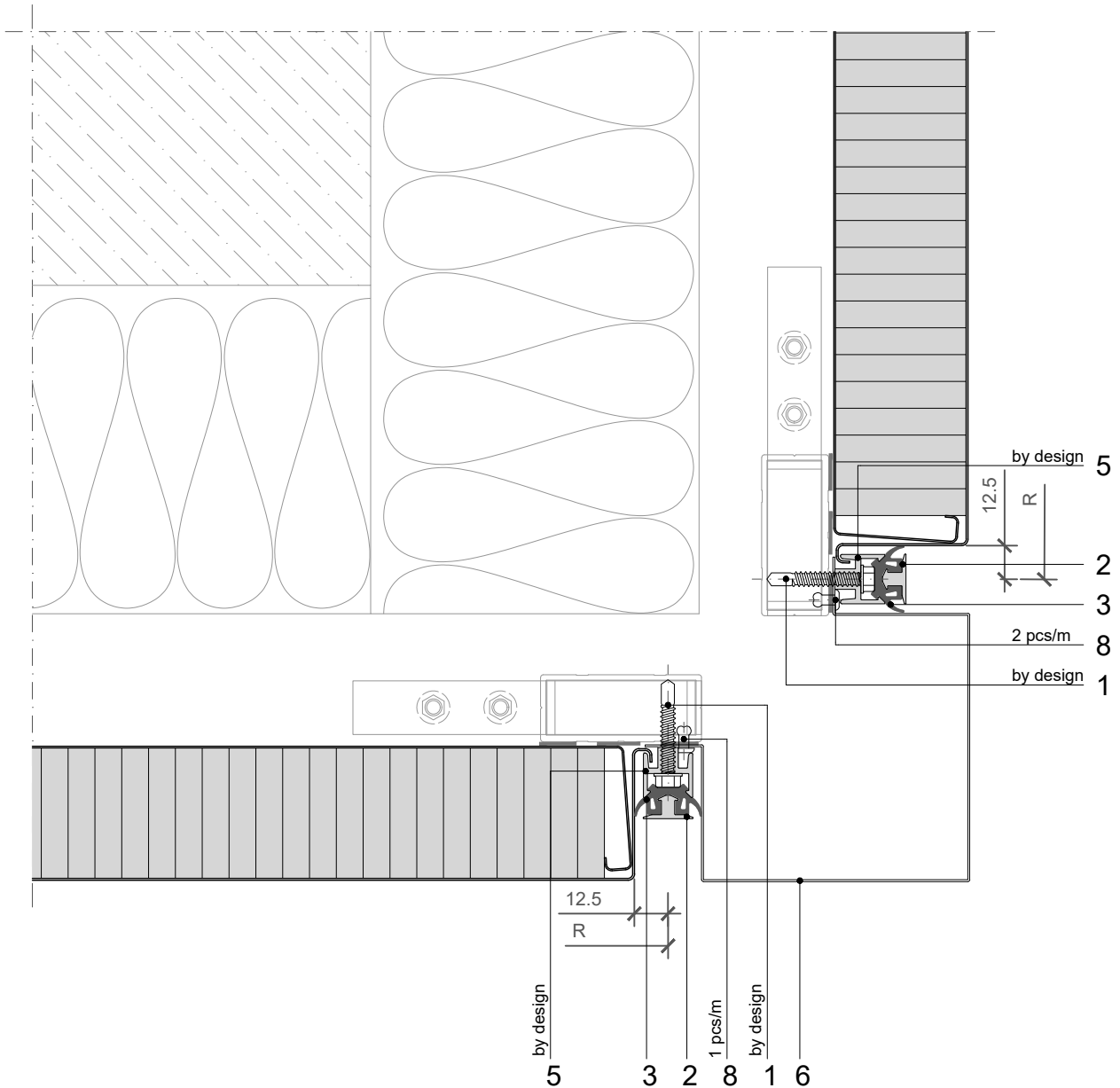
JOINT TYPE

- B - B ○ BF - BF
- B - BF ○ F - B
- BF - B ○ F - BF

BUILDING APPLICATION

- External Facade ○ External Soffit
- Internal Wall ○ Internal Ceiling

HORIZONTAL CUT



POS.	CODE	ELEMENTS	SCALE: M 1:2.5
1	P039	Fixing screw - The type of screw depends on the material of the substructure (wind load)	
2	A162	Decorative profile HF 64 - recessed look of transversal joint	
3	T121	Transversal gasket	
5	A161	Load bearing fixing element HF 63 (wind load)	
6	O1054	Corner flashing - sharp	
8	K002	Blind rivet 4x10	

EXTERNAL CORNER

Trimo Group holds full copyrights on the information and details provided on this media, therefore any unauthorized reproduction and distribution is strictly prohibited.

**HORIZONTAL
INSTALLATION**

**QBISS
SCREEN H+**

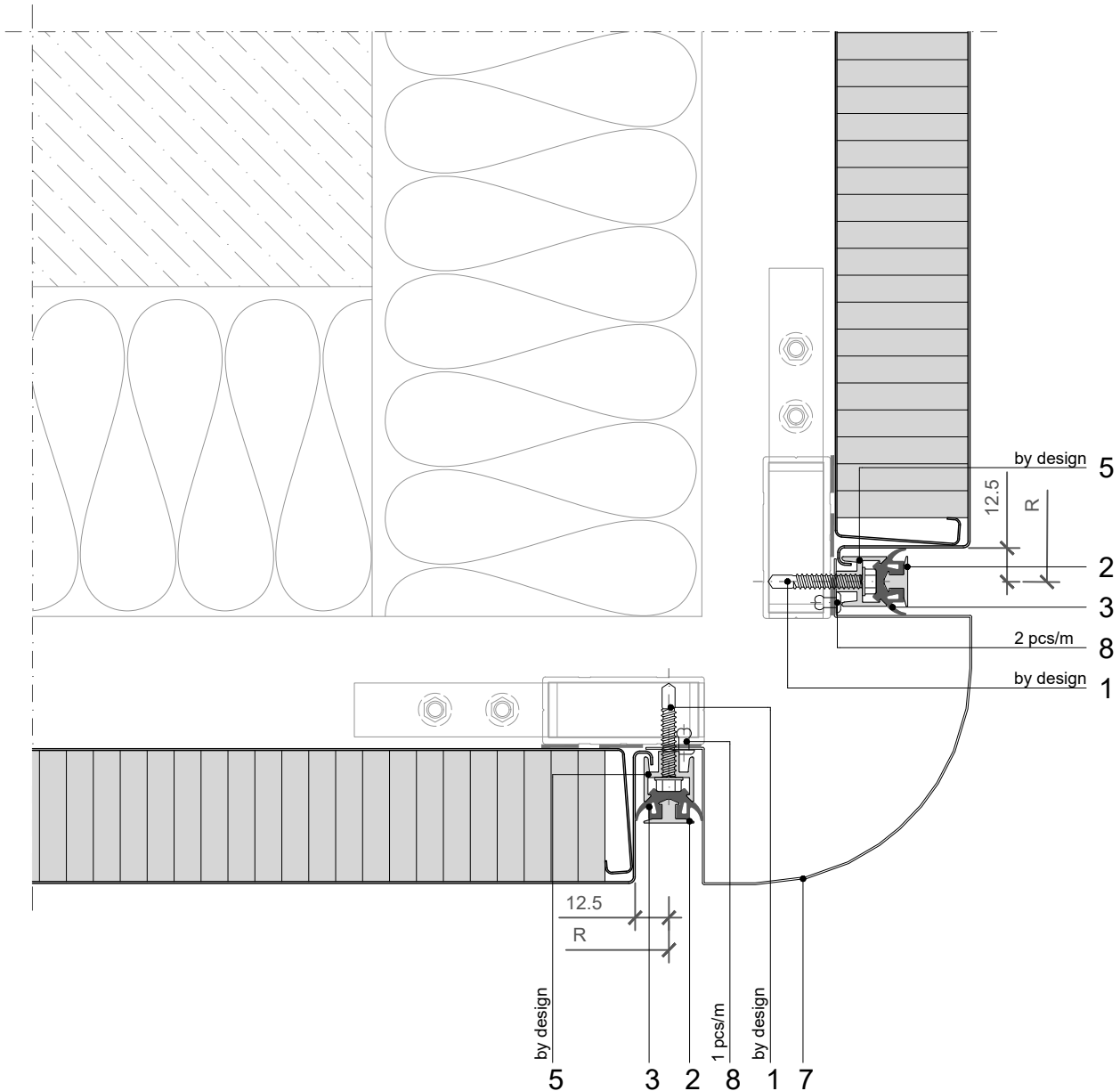
JOINT TYPE

- B - B ○ BF - BF
- B - BF ○ F - B
- BF - B ○ F - BF

BUILDING APPLICATION

- External Facade ○ External Soffit
- Internal Wall ○ Internal Ceiling

HORIZONTAL CUT

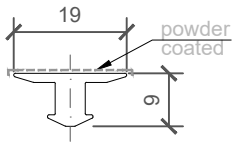


POS.	CODE	ELEMENTS	SCALE: M 1:2.5
1	P039	Fixing screw - The type of screw depends on the material of the substructure (wind load)	
2	A162	Decorative profile HF 64 - recessed look of transversal joint	
3	T121	Transversal gasket	
5	A161	Load bearing fixing element HF 63 (wind load)	
7	O1062	Corner flashing - round	
8	K002	Blind rivet 4x10	

EXTERNAL CORNER

Trimo Group holds full copyrights on the information and details provided on this media, therefore any unauthorized reproduction and distribution is strictly prohibited.

2_ELEMENT_A162_Decorative profile HF 64

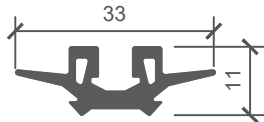


COLOUR	----
LENGHT_1	----
PIECES_1	----
LENGHT_2	----
PIECES_2	----

NOTES

material: EN AW-6061
Lmax = 4000 mm (6000 mm)

3_ELEMENT_T121_Transversal gasket

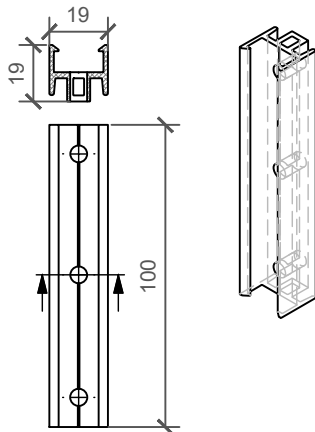


LENGHT_1	----
PIECES_1	----
LENGHT_2	----
PIECES_2	----

NOTES

material: EPDM

5_ELEMENT_A161_Load bearing fixing element HF 63 (wind load)

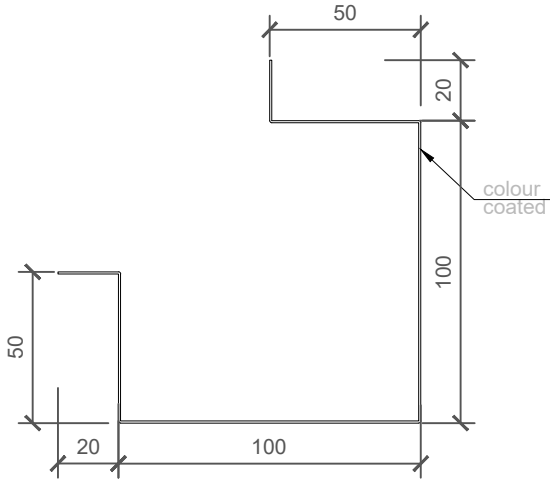


PIECES	----
---------------	------

NOTES

material: EN AW-6063 T66
L= 100 mm

6_ELEMENT_O1054_Corner flashing - sharp

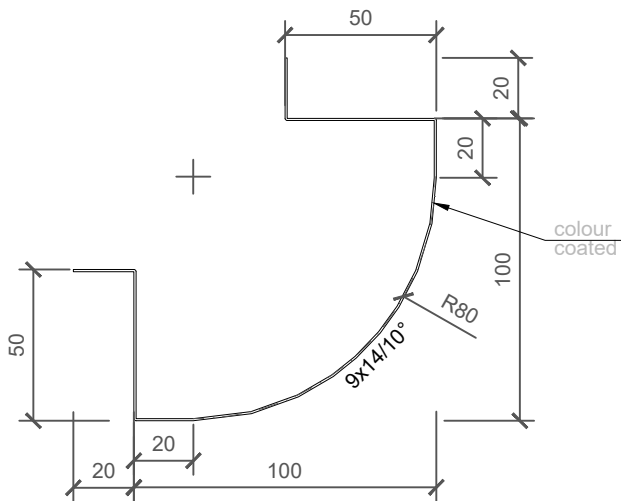


COLOUR	----
LENGHT_1	----
PIECES_1	----
LENGHT_2	----
PIECES_2	----

NOTES

material: Colored metal sheet (0,7 mm)
 sheet width: 340 mm
 Lmax = 6000 mm

7_ELEMENT_O1062_Corner flashing - round



COLOUR	----
LENGHT_1	----
PIECES_1	----
LENGHT_2	----
PIECES_2	----

NOTES

material: Colored metal sheet (0,7 mm)
 sheet width: 306 mm
 Lmax = 6000 mm

**HORIZONTAL
INSTALLATION**

**QBISS
SCREEN H+**

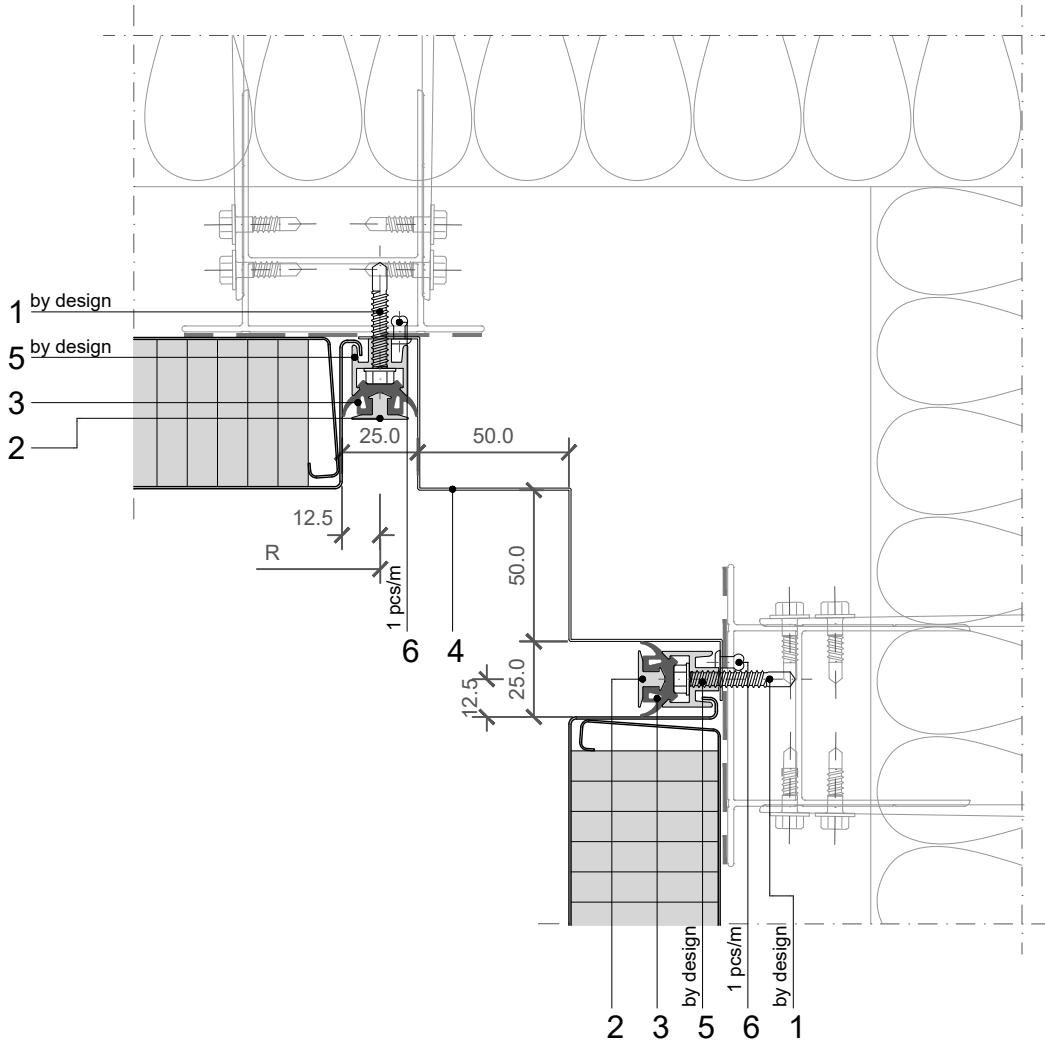
JOINT TYPE

- B - B ○ BF - BF
- B - BF ○ F - B
- BF - B ○ F - BF

BUILDING APPLICATION

- External Facade ○ External Soffit
- Internal Wall ○ Internal Ceiling

HORIZONTAL CUT

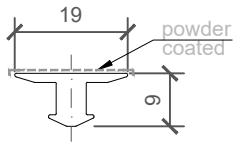


POS.	CODE	ELEMENTS	SCALE: M 1:2.5
1	P039	Fixing screw - The type of screw depends on the material of the substructure (wind load)	
2	A162	Decorative profile HF 64 - recessed look of transversal joint	
3	T121	Transversal gasket	
4	O1552	Corner flashing	
5	A161	Load bearing fixing element HF 63 (wind load)	
6	K002	Blind rivet 4x10	

INTERNAL CORNER

Trimo Group holds full copyrights on the information and details provided on this media, therefore any unauthorized reproduction and distribution is strictly prohibited.

2_ELEMENT_A162_Decorative profile HF 64

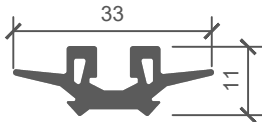


COLOUR	----
LENGHT_1	----
PIECES_1	----
LENGHT_2	----
PIECES_2	----

NOTES

material: EN AW-6061
Lmax = 4000 mm (6000 mm)

3_ELEMENT_T121_Transversal gasket

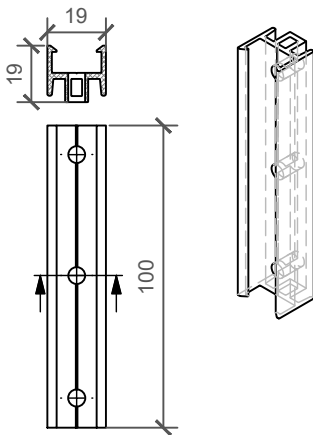


LENGHT_1	----
PIECES_1	----
LENGHT_2	----
PIECES_2	----

NOTES

material: EPDM

5_ELEMENT_A161_Load bearing fixing element HF 63 (wind load)

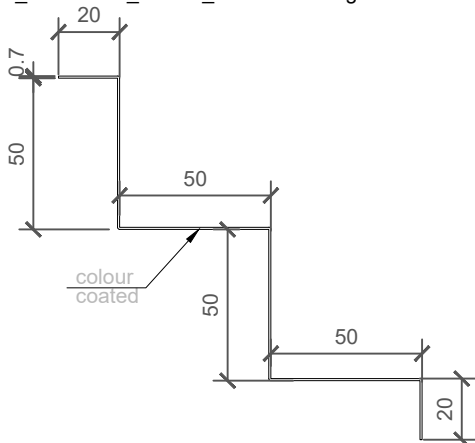


PIECES	----
---------------	------

NOTES

material: EN AW-6063 T66
L= 100 mm

4_ELEMENT_O1552_Corner flashing



COLOUR	----
LENGHT_1	----
PIECES_1	----
LENGHT_2	----
PIECES_2	----

NOTES

material: Colored metal sheet (0,7 mm)
sheet width: 240 mm
Lmax = 6000 mm

HORIZONTAL INSTALLATION

QBISS SCREEN H+

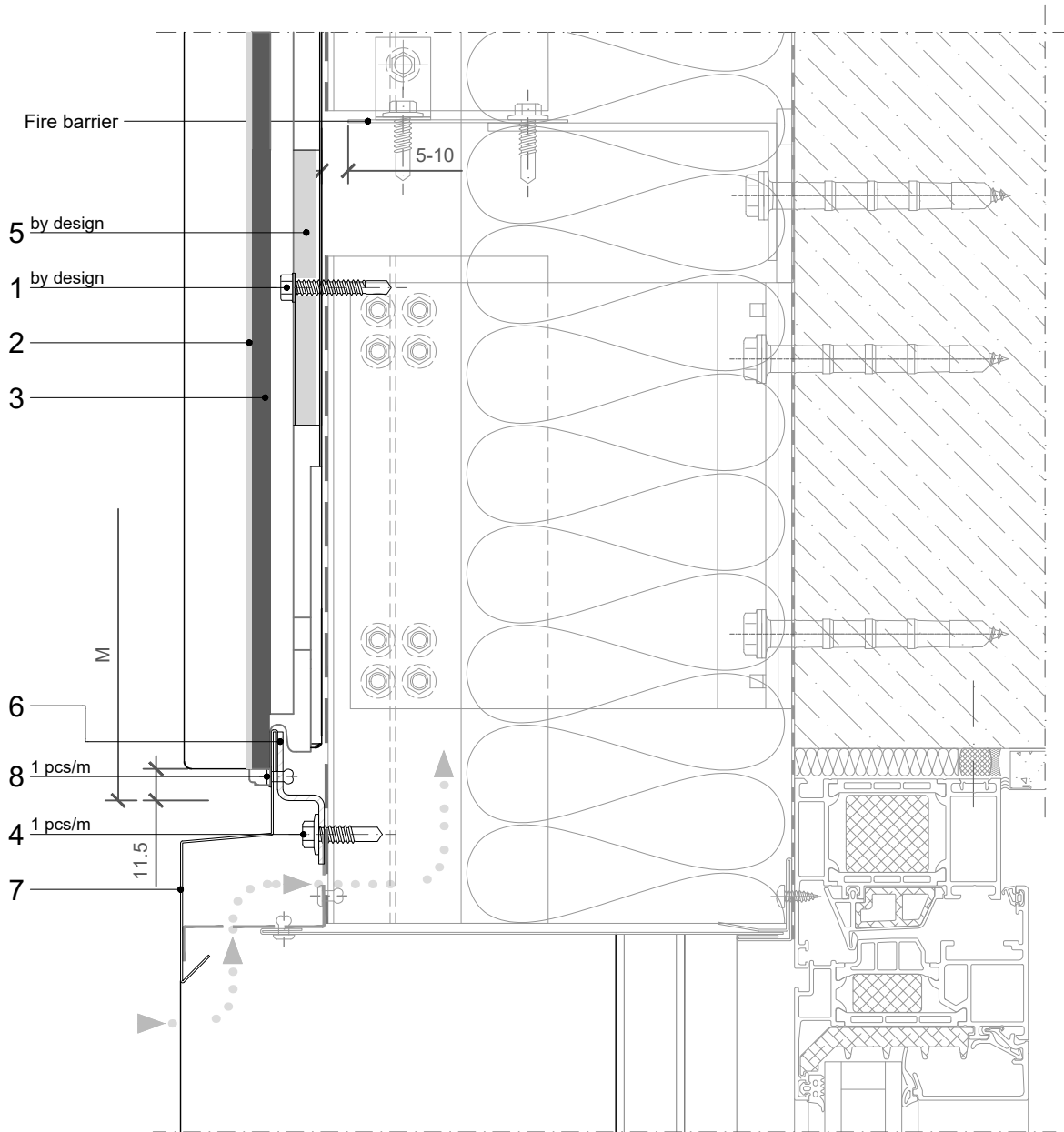
JOINT TYPE

- B - B ○ BF - BF
- B - BF ○ F - B
- BF - B ○ F - BF

BUILDING APPLICATION

- External Facade ○ External Soffit
- Internal Wall ○ Internal Ceiling

VERTICAL CUT



POS.	CODE	ELEMENTS	SCALE: M 1:2.5
1	P038	Fixing screw - The type of screw depends on the material of the substructure (wind load)	
2	A162	Decorative profile HF 64 - recessed look of transversal joint	
3	T121	Transversal gasket	
4	P038	Fixing screw - The type of screw depends on the material of the substructure	
5	A161	Load bearing fixing element HF 63 (wind load)	
6	N1273	Cladding element holder 2x25x17x25	
7	O1041	Drip flashing	
8	K002	Blind rivet 4x10	

**HORIZONTAL
INSTALLATION**

JOINT TYPE

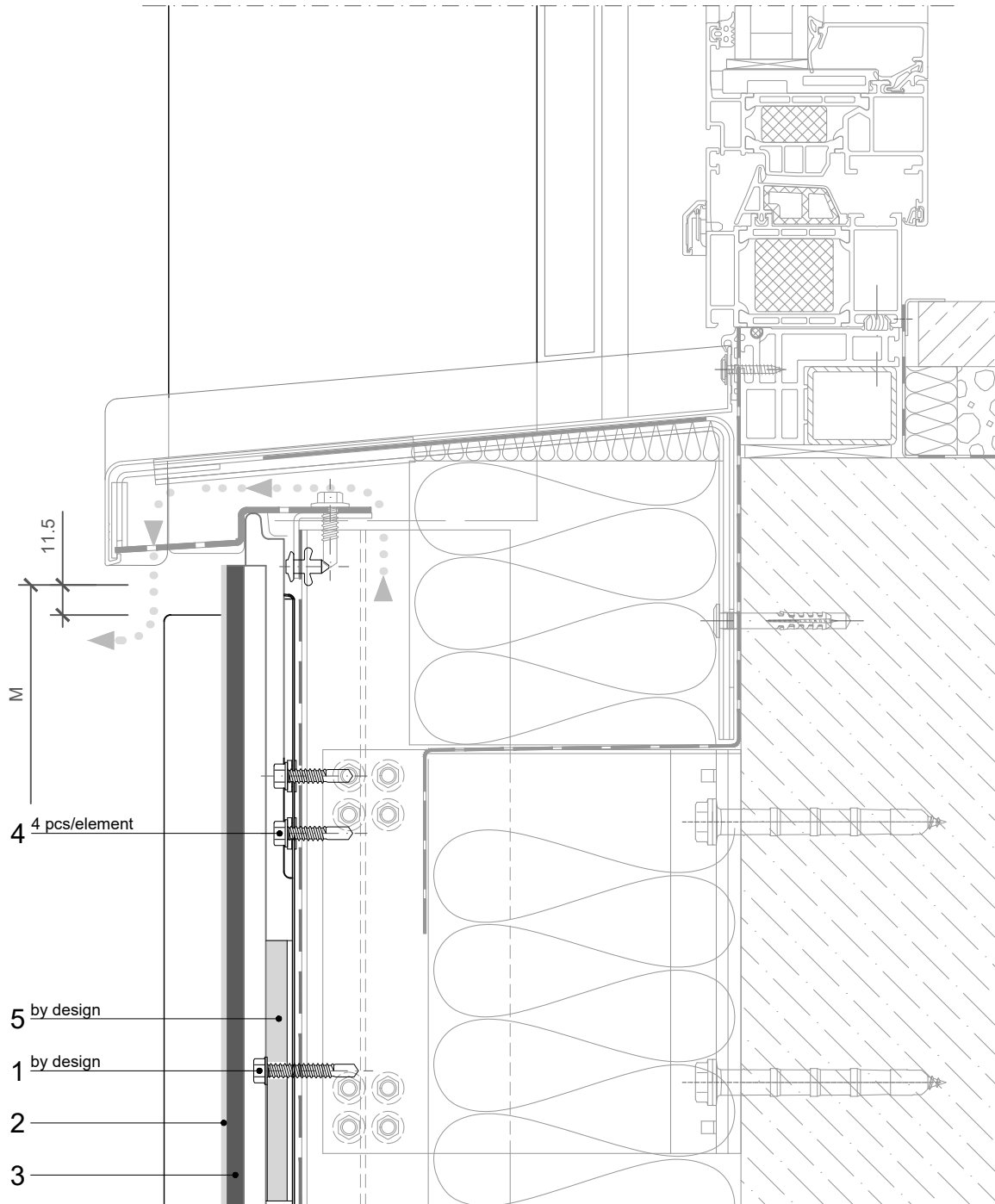
- B - B ○ BF - BF
- B - BF ○ F - B
- BF - B ○ F - BF

BUILDING APPLICATION

- External Facade ○ External Soffit
- Internal Wall ○ Internal Ceiling

QBISS SCREEN H+

VERTICAL CUT



POS.	CODE	ELEMENTS	SCALE: M 1:2.5
1	P039	Fixing screw - The type of screw depends on the material of the substructure (wind load)	
2	A162	Decorative profile HF 64 - recessed look of transversal joint	
3	T121	Transversal gasket	
4	P038	Fixing screw - The type of screw depends on the material of the substructure (self weight load)	
5	A161	Load bearing fixing element HF 63 (wind load)	

**HORIZONTAL
INSTALLATION**

**QBISS
SCREEN H+**

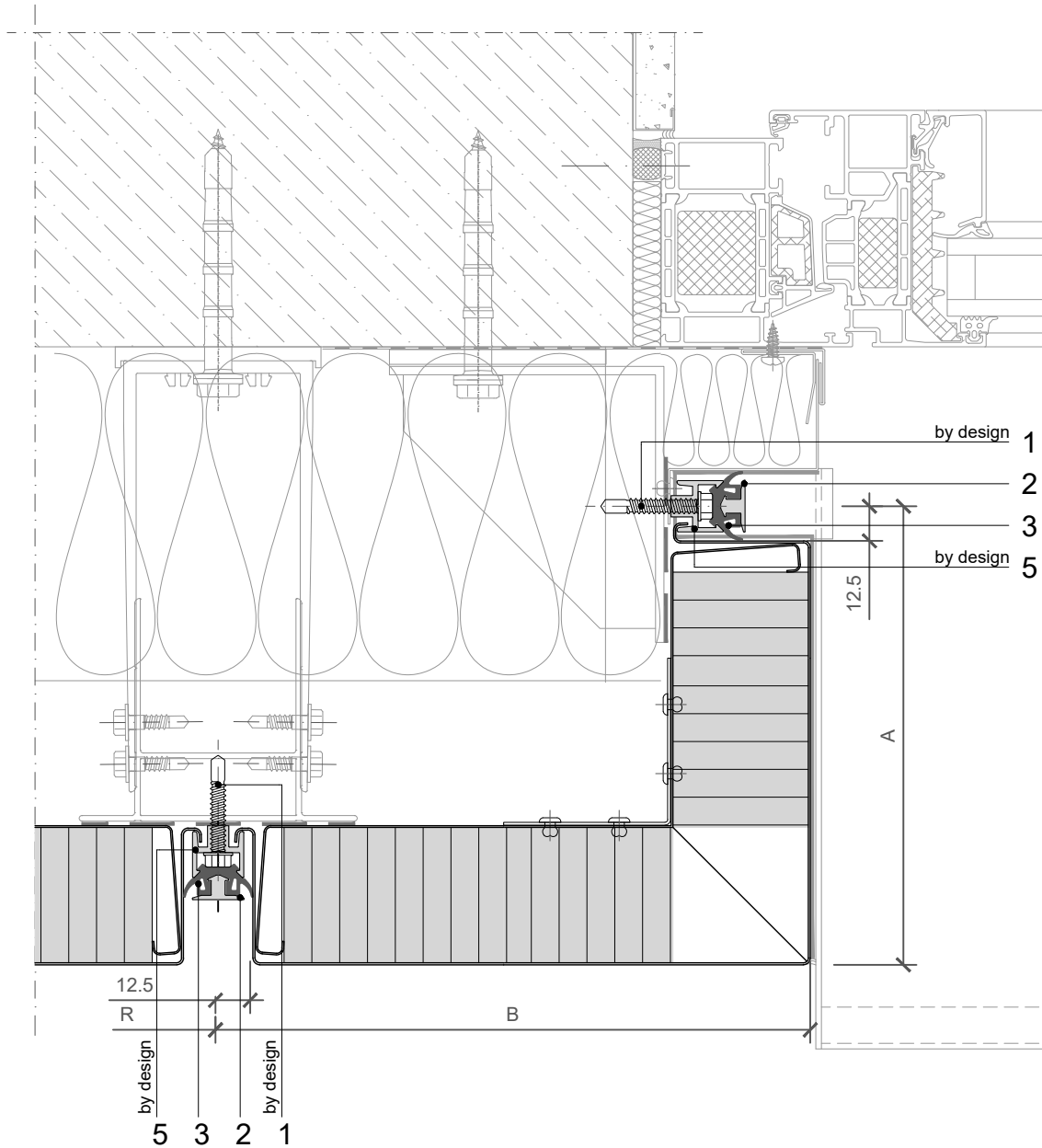
JOINT TYPE

- B - B ○ BF - BF
- B - BF ○ F - B
- BF - B ○ F - BF

BUILDING APPLICATION

- External Facade ○ External Soffit
- Internal Wall ○ Internal Ceiling

HORIZONTAL CUT



POS.	CODE	ELEMENTS	SCALE: M 1:2.5
1	P039	Fixing screw - The type of screw depends on the material of the substructure (wind load)	
2	A162	Decorative profile HF 64 - recessed look of transversal joint	
3	T121	Transversal gasket	
5	A161	Load bearing fixing element HF 63 (wind load)	

WINDOW

Trimo Group holds full copyrights on the information and details provided on this media, therefore any unauthorized reproduction and distribution is strictly prohibited.

**HORIZONTAL
INSTALLATION**

**QBISS
SCREEN H+**

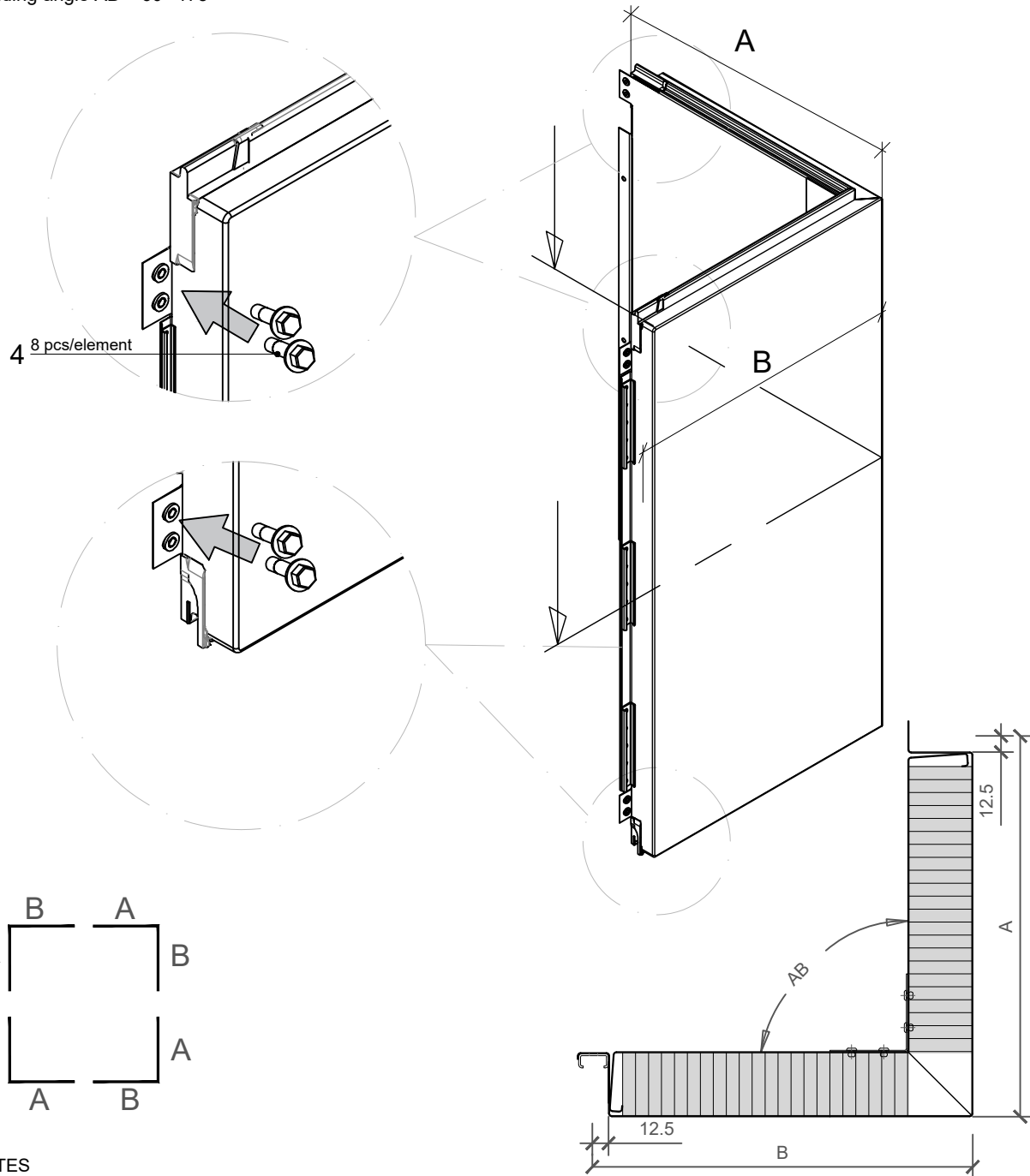
JOINT TYPE

- B - B ○ BF - BF
- B - BF ○ F - B
- BF - B ○ F - BF

BUILDING APPLICATION

- External Facade ○ External Soffit
- Internal Wall ○ Internal Ceiling

M = 600-1200mm
 A+B = R; Rmin = 550mm; Rmax = 2000mm
 Amin(Bmin) = 150mm
 Amax(Bmax) = 1000mm
 Bending angle AB = 60°-175°



NOTES

- Prefabricated external corner element
- Dimensions A and B must be adjusted to cladding and building tolerances

POS. CODE ELEMENTS

4	P038	Fixing screw - The type of screw depends on the material of the substructure (self weight load)
---	------	---

WINDOW

Trimo Group holds full copyrights on the information and details provided on this media, therefore any unauthorized reproduction and distribution is strictly prohibited.

HORIZONTAL INSTALLATION

QBISS SCREEN H+

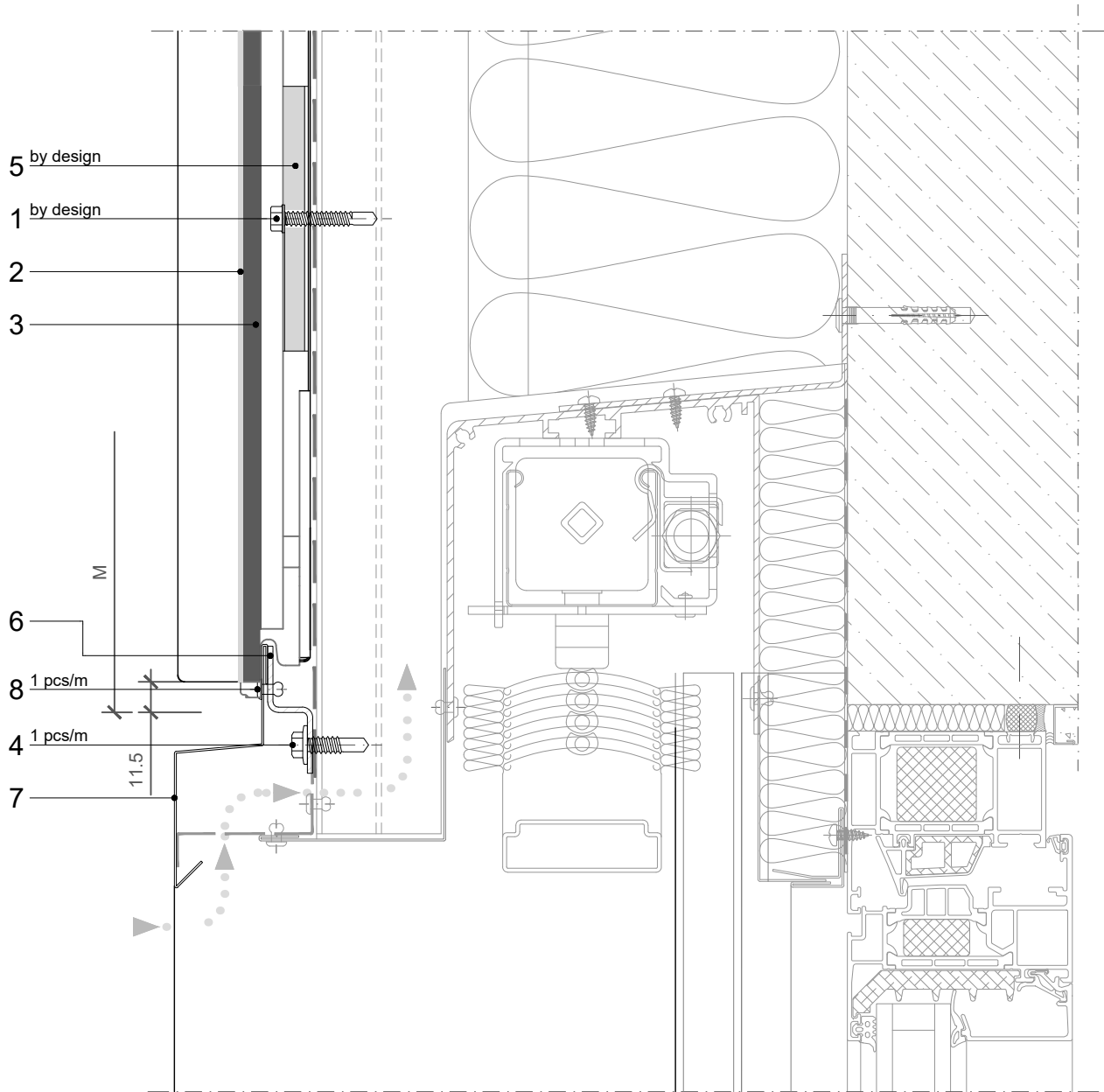
JOINT TYPE

- B - B ○ BF - BF
- B - BF ○ F - B
- BF - B ○ F - BF

BUILDING APPLICATION

- External Facade ○ External Soffit
- Internal Wall ○ Internal Ceiling

VERTICAL CUT



POS.	CODE	ELEMENTS	SCALE: M 1:2.5
1	P039	Fixing screw - The type of screw depends on the material of the substructure (wind load)	
2	A162	Decorative profile HF 64 - recessed look of transversal joint	
3	T121	Transversal gasket	
4	P038	Fixing screw - The type of screw depends on the material of the substructure	
5	A161	Load bearing fixing element HF 63 (wind load)	
6	N1273	Cladding element holder 2x25x17x25	
7	O1041	Drip flashing	
8	K002	Blind rivet 4x10	

**HORIZONTAL
INSTALLATION**

**QBISS
SCREEN H+**

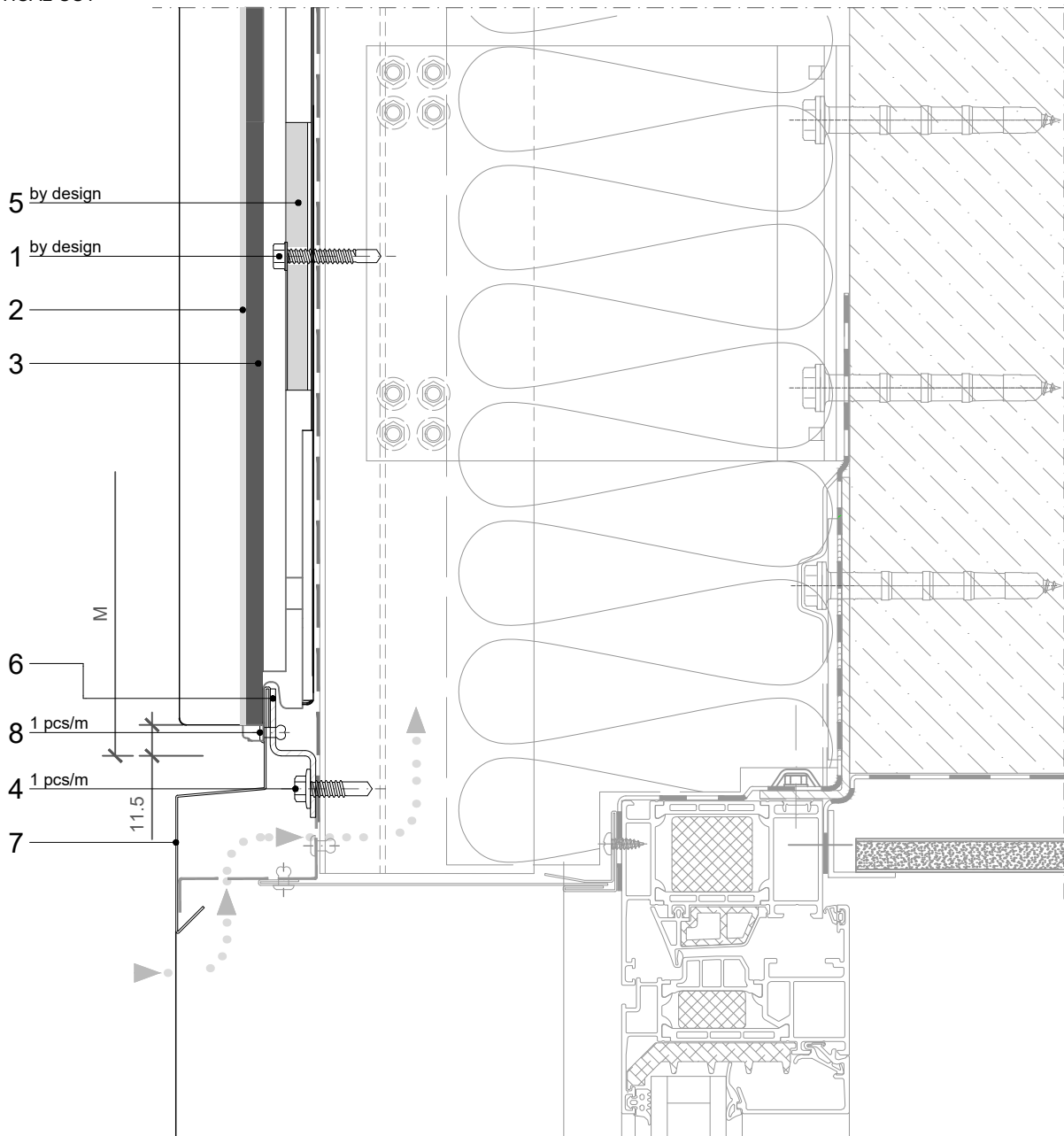
JOINT TYPE

- B - B ○ BF - BF
- B - BF ○ F - B
- BF - B ○ F - BF

BUILDING APPLICATION

- External Facade ○ External Soffit
- Internal Wall ○ Internal Ceiling

VERTICAL CUT



POS.	CODE	ELEMENTS	SCALE: M 1:2.5
1	P039	Fixing screw - The type of screw depends on the material of the substructure (wind load)	
2	A162	Decorative profile HF 64 - recessed look of transversal joint	
3	T121	Transversal gasket	
4	P038	Fixing screw - The type of screw depends on the material of the substructure	
5	A161	Load bearing fixing element HF 63 (wind load)	
6	N1273	Cladding element holder 2x25x17x25	
7	O1041	Drip flashing	
8	K002	Blind rivet 4x10	

**HORIZONTAL
INSTALLATION**

**QBISS
SCREEN H+**

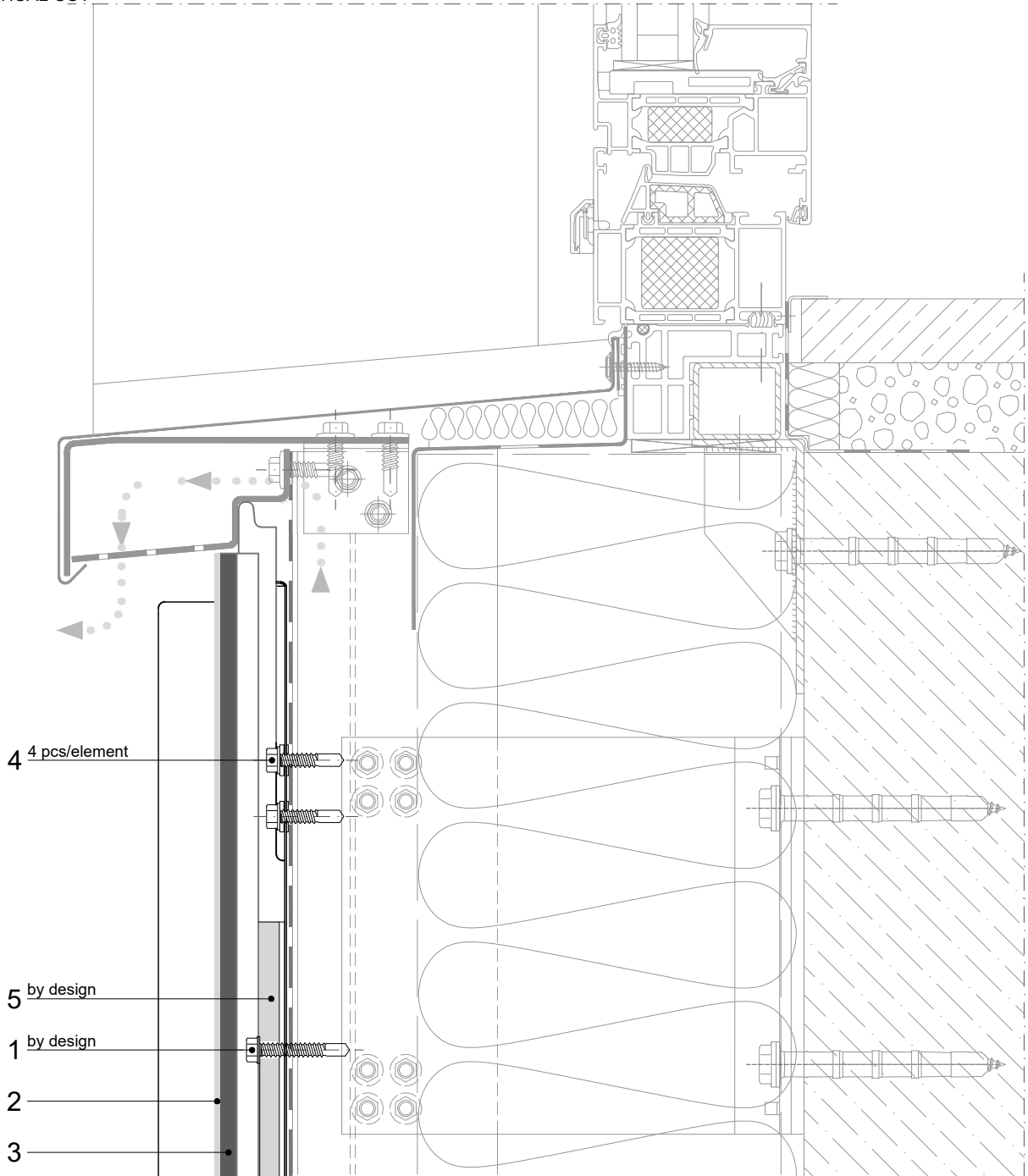
JOINT TYPE

- B - B ○ BF - BF
- B - BF ○ F - B
- BF - B ○ F - BF

BUILDING APPLICATION

- External Facade ○ External Soffit
- Internal Wall ○ Internal Ceiling

VERTICAL CUT



POS.	CODE	ELEMENTS	SCALE: M 1:2.5
1	P039	Fixing screw - The type of screw depends on the material of the substructure (wind load)	
2	A162	Decorative profile HF 64 - recessed look of transversal joint	
3	T121	Transversal gasket	
4	P038	Fixing screw - The type of screw depends on the material of the substructure	
5	A161	Load bearing fixing element HF 63 (wind load)	

**HORIZONTAL
INSTALLATION**

**QBISS
SCREEN H+**

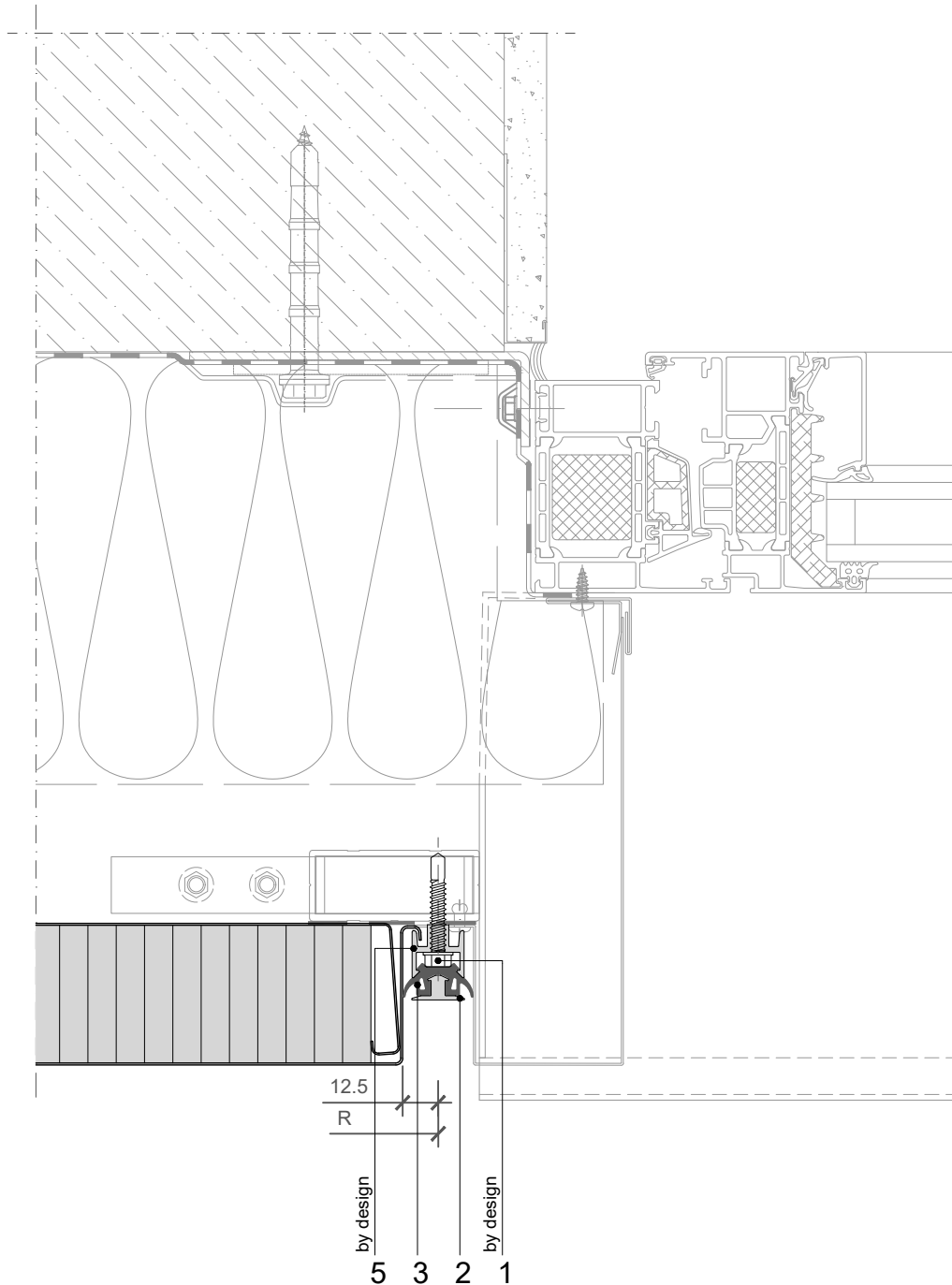
JOINT TYPE

- B - B ○ BF - BF
- B - BF ○ F - B
- BF - B ○ F - BF

BUILDING APPLICATION

- External Facade ○ External Soffit
- Internal Wall ○ Internal Ceiling

HORIZONTAL CUT



POS.	CODE	ELEMENTS	SCALE: M 1:2.5
1	P039	Fixing screw - The type of screw depends on the material of the substructure (wind load)	
2	A162	Decorative profile HF 64 - recessed look of transversal joint	
3	T121	Transversal gasket	
5	A161	Load bearing fixing element HF 63 (wind load)	

WINDOW

Trimo Group holds full copyrights on the information and details provided on this media, therefore any unauthorized reproduction and distribution is strictly prohibited.

**HORIZONTAL
INSTALLATION**

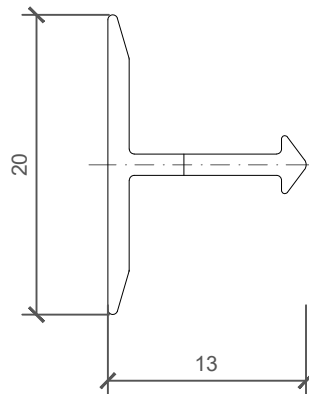
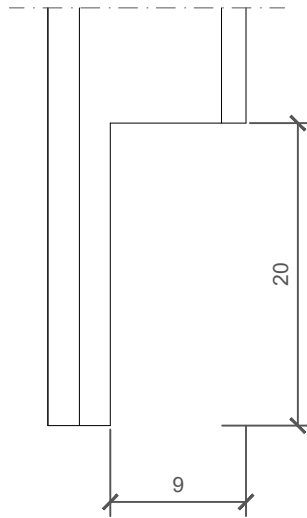
**QBISS
SCREEN H+**

JOINT TYPE

- B - B BF - BF
- B - BF F - B
- BF - B F - BF

BUILDING APPLICATION

- External Facade External Soffit
- Internal Wall Internal Ceiling

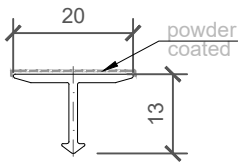


NOTES

- 2_ELEMENT_A162_Decorative profile HF 64 - mechanical treatment

SCALE: M 2:1

2_ELEMENT_A162_Decorative profile HF 64

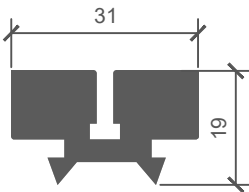


COLOUR	----
LENGHT_1	----
PIECES_1	----
LENGHT_2	----
PIECES_2	----

NOTES

material: EN AW-6061
Lmax = 4000 mm (6000 mm)

3_ELEMENT_T121_Transversal gasket

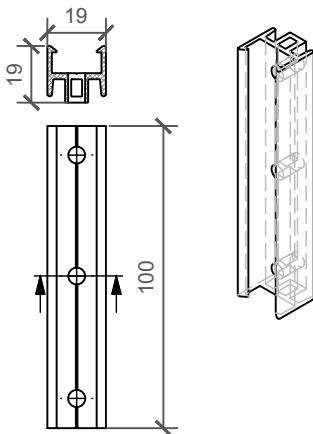


LENGHT_1	----
PIECES_1	----
LENGHT_2	----
PIECES_2	----

NOTES

material: EPDM

5_ELEMENT_A161_Load bearing fixing element HF 63 (wind load)

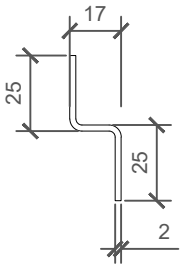


PIECES	----
---------------	------

NOTES

material: EN AW-6063 T66
L= 100 mm

6_ELEMENT_N1273_Cladding element holder 2x25x17x25

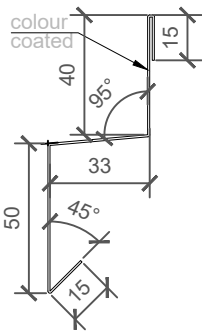


LENGHT_1	----
PIECES_1	----
LENGHT_2	----
PIECES_2	----

NOTES

material: Zinc - coated metal sheet (2 mm) / option: Stainless steel (2 mm)
sheet width: 59 mm

7_ELEMENT_O1401_Drip flashing



COLOUR	----
LENGHT_1	----
PIECES_1	----
LENGHT_2	----
PIECES_2	----

NOTES

material: Colored metal sheet (0,7 mm)
sheet width: 153 mm
Lmax = 6000 mm

HORIZONTAL INSTALLATION

QBISS SCREEN H+

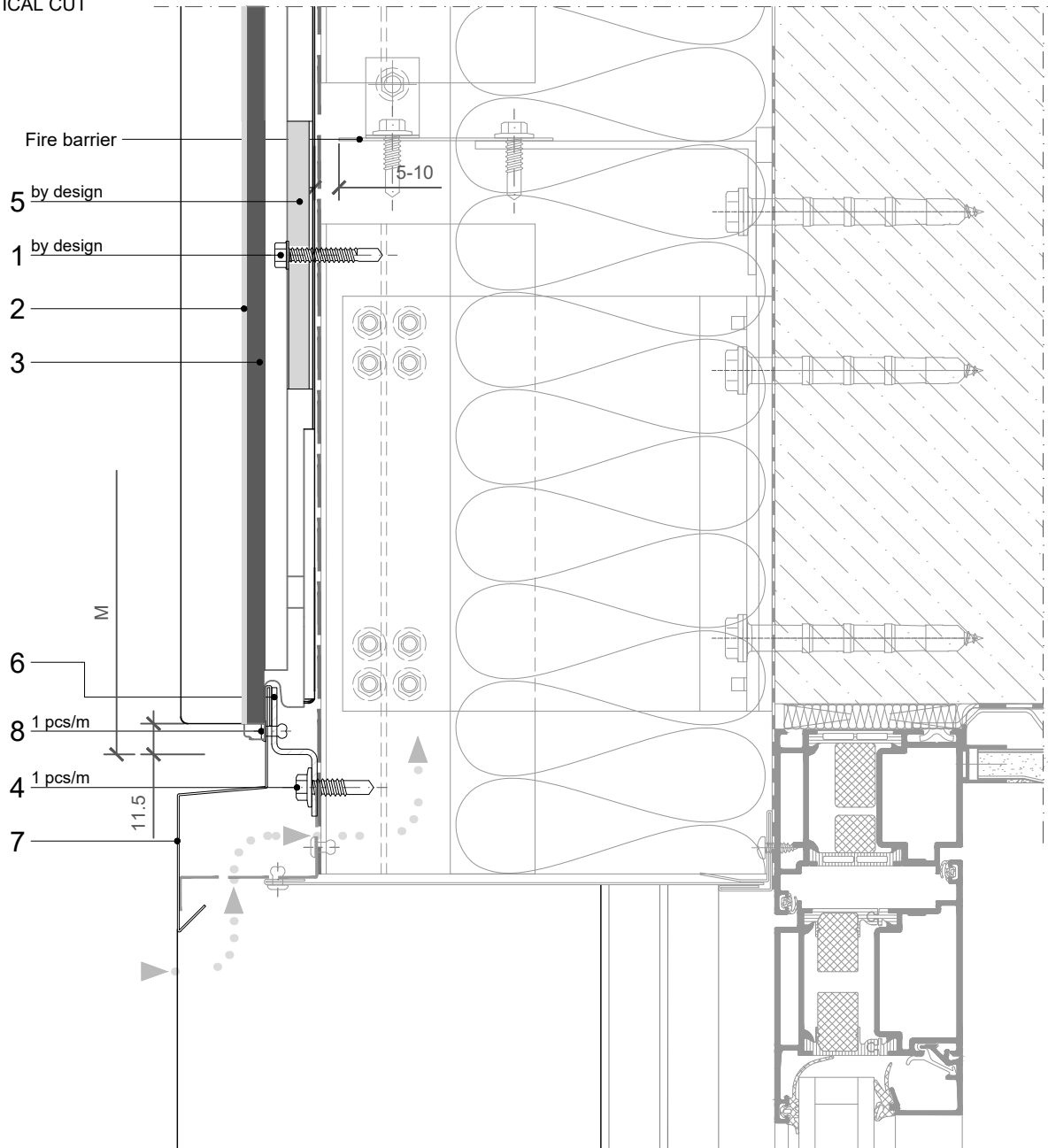
JOINT TYPE

- B - B ○ BF - BF
- B - BF ○ F - B
- BF - B ○ F - BF

BUILDING APPLICATION

- External Facade ○ External Soffit
- Internal Wall ○ Internal Ceiling

VERTICAL CUT



POS.	CODE	ELEMENTS	SCALE: M 1:2.5
1	P039	Fixing screw - The type of screw depends on the material of the substructure (wind load)	
2	A162	Decorative profile HF 64 - recessed look of transversal joint	
3	T121	Transversal gasket	
4	P038	Fixing screw - The type of screw depends on the material of the substructure	
5	A161	Load bearing fixing element HF 63 (wind load)	
6	N1273	Cladding element holder 2x25x17x25	
7	O1041	Drip flashing	
8	K002	Blind rivet 4x10	

**HORIZONTAL
INSTALLATION**

**QBISS
SCREEN H+**

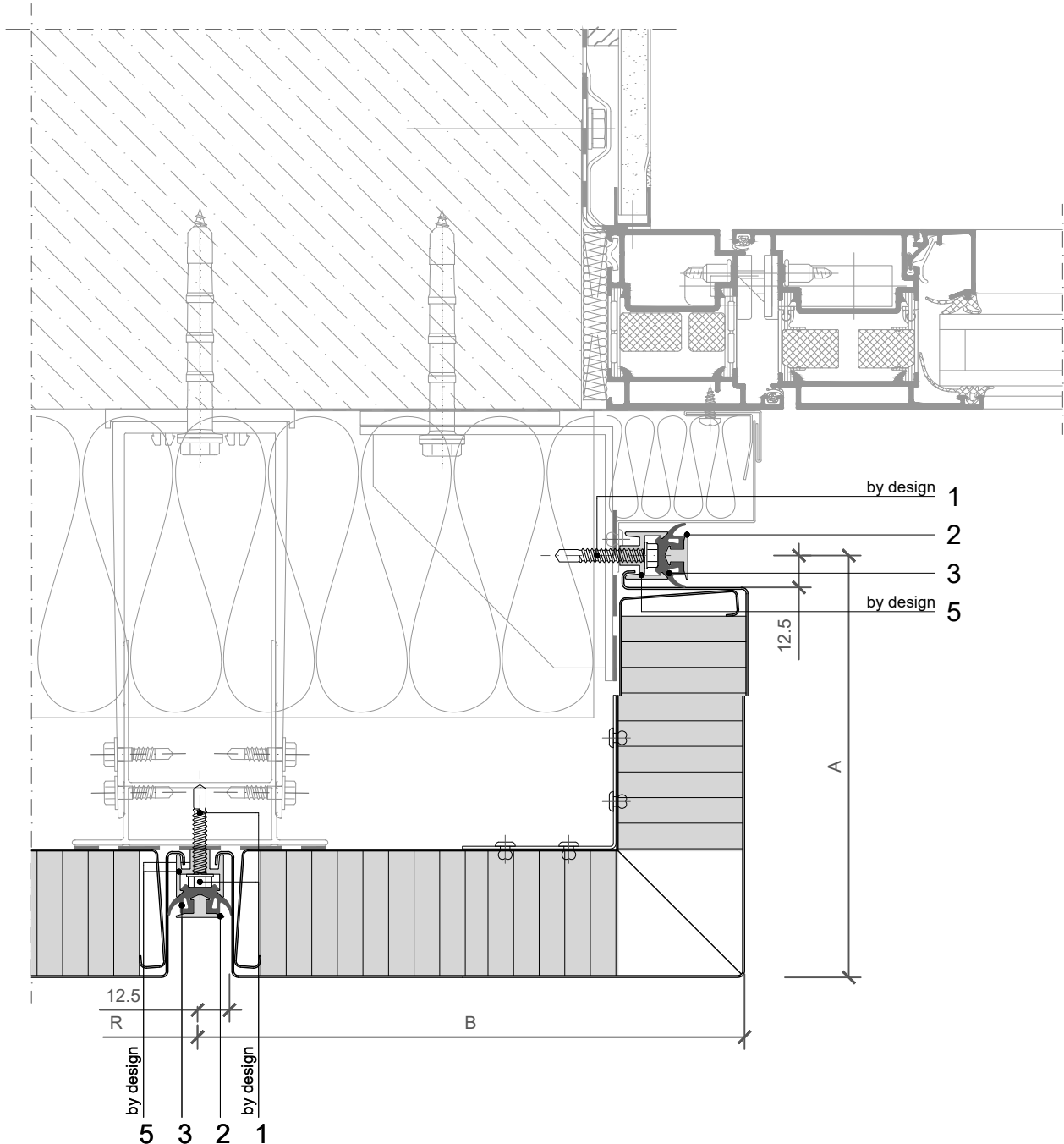
JOINT TYPE

- B - B ○ BF - BF
- B - BF ○ F - B
- BF - B ○ F - BF

BUILDING APPLICATION

- External Facade ○ External Soffit
- Internal Wall ○ Internal Ceiling

HORIZONTAL CUT



POS.	CODE	ELEMENTS	SCALE: M 1:2.5
1	P039	Fixing screw - The type of screw depends on the material of the substructure (wind load)	
2	A162	Decorative profile HF 64 - recessed look of transversal joint	
3	T121	Transversal gasket	
5	A161	Load bearing fixing element HF 63 (wind load)	

DOOR

Trimo Group holds full copyrights on the information and details provided on this media, therefore any unauthorized reproduction and distribution is strictly prohibited.

**HORIZONTAL
INSTALLATION**

**QBISS
SCREEN H+**

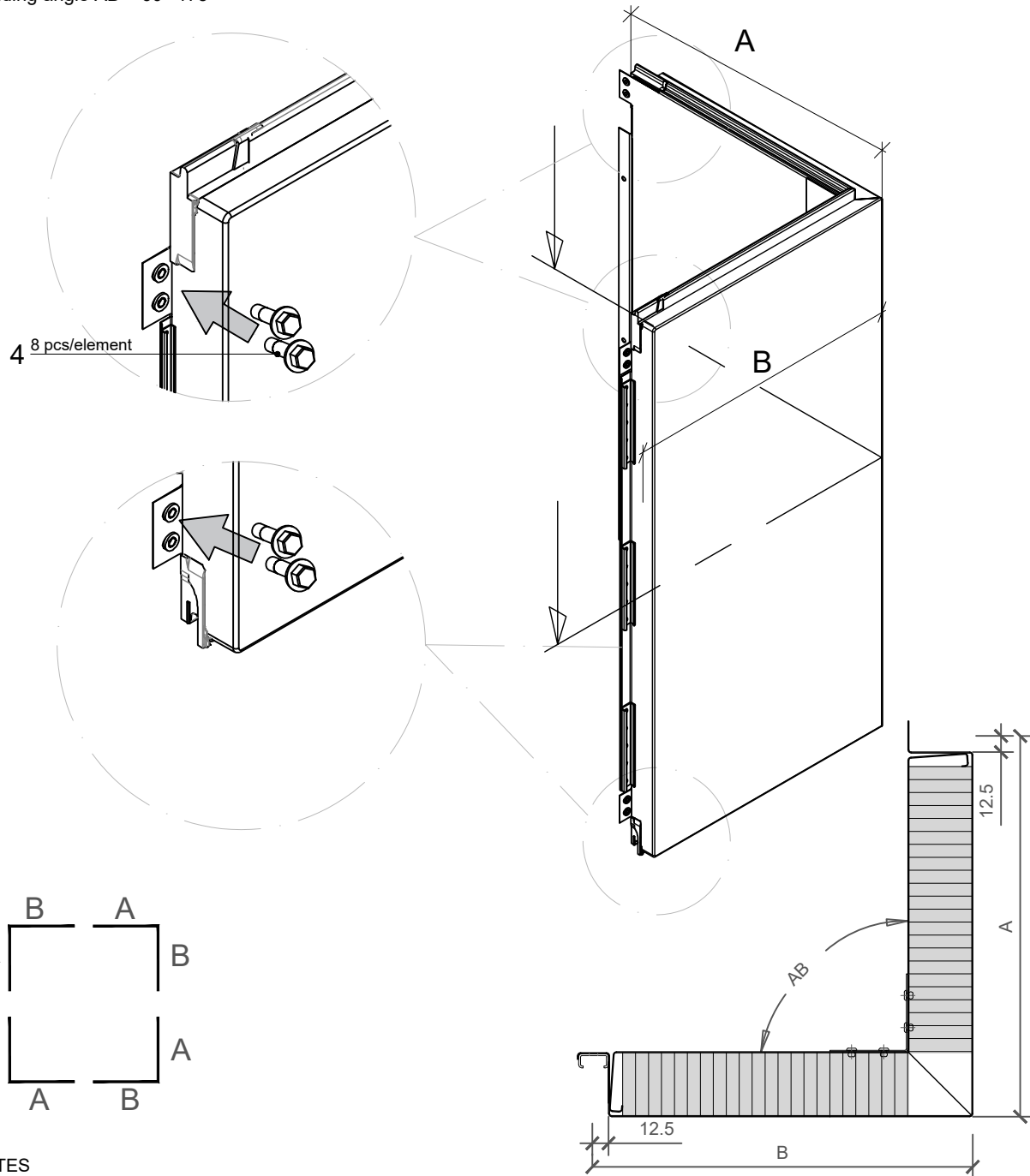
JOINT TYPE

- B - B ○ BF - BF
- B - BF ○ F - B
- BF - B ○ F - BF

BUILDING APPLICATION

- External Facade ○ External Soffit
- Internal Wall ○ Internal Ceiling

M = 600-1200mm
 A+B = R; Rmin = 550mm; Rmax = 2000mm
 Amin(Bmin) = 150mm
 Amax(Bmax) = 1000mm
 Bending angle AB = 60°-175°



NOTES

- Prefabricated external corner element
- Dimensions A and B must be adjusted to cladding and building tolerances

POS.	CODE	ELEMENTS
4	P038	Fixing screw - The type of screw depends on the material of the substructure (self weight load)

DOOR

Trimo Group holds full copyrights on the information and details provided on this media, therefore any unauthorized reproduction and distribution is strictly prohibited.

**HORIZONTAL
INSTALLATION**

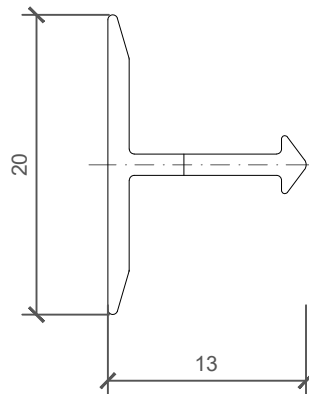
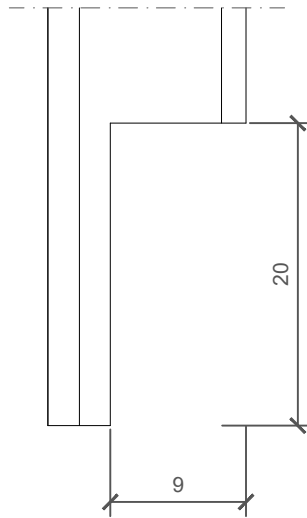
**QBISS
SCREEN H+**

JOINT TYPE

- B - B BF - BF
- B - BF F - B
- BF - B F - BF

BUILDING APPLICATION

- External Facade External Soffit
- Internal Wall Internal Ceiling



NOTES

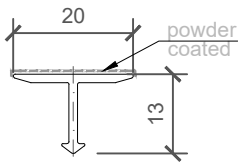
- 2_ELEMENT_A162_Decorative profile HF 64 - mechanical treatment

SCALE: M 2:1

DOOR

Trimo Group holds full copyrights on the information and details provided on this media, therefore any unauthorized reproduction and distribution is strictly prohibited.

2_ELEMENT_A162_Decorative profile HF 64

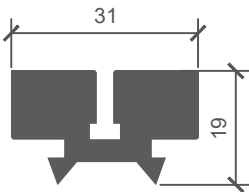


COLOUR	----
LENGHT_1	----
PIECES_1	----
LENGHT_2	----
PIECES_2	----

NOTES

material: EN AW-6061
Lmax = 4000 mm (6000 mm)

3_ELEMENT_T121_Transversal gasket

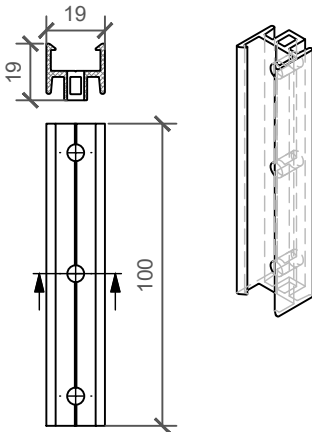


LENGHT_1	----
PIECES_1	----
LENGHT_2	----
PIECES_2	----

NOTES

material: EPDM

5_ELEMENT_A161_Load bearing fixing element HF 63 (wind load)

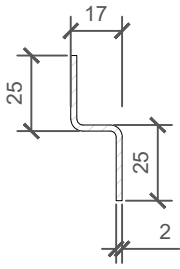


PIECES	----
---------------	------

NOTES

material: EN AW-6063 T66
L= 100 mm

6_ELEMENT_N1273_Cladding element holder 2x25x17x25

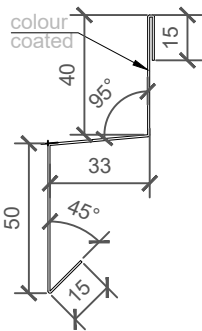


LENGHT_1	----
PIECES_1	----
LENGHT_2	----
PIECES_2	----

NOTES

material: Zinc - coated metal sheet (2 mm) / option: Stainless steel (2 mm)
sheet width: 59 mm

7_ELEMENT_O1401_Drip flashing



COLOUR	----
LENGHT_1	----
PIECES_1	----
LENGHT_2	----
PIECES_2	----

NOTES

material: Colored metal sheet (0,7 mm)
sheet width: 153 mm
Lmax = 6000 mm

**HORIZONTAL
INSTALLATION**

**QBISS
SCREEN H+**

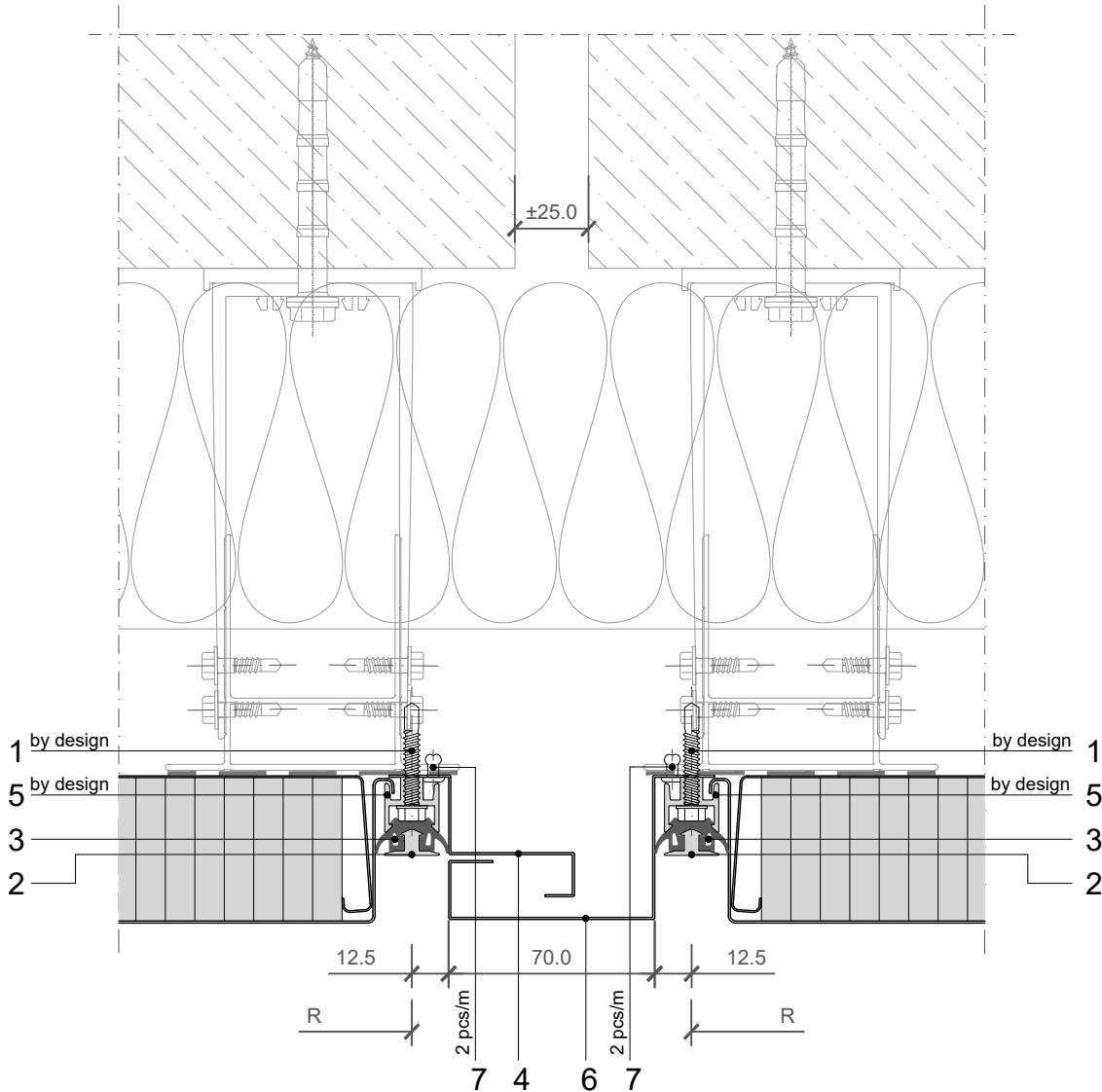
JOINT TYPE

- B - B ○ BF - BF
- B - BF ○ F - B
- BF - B ○ F - BF

BUILDING APPLICATION

- External Facade ○ External Soffit
- Internal Wall ○ Internal Ceiling

HORIZONTAL CUT

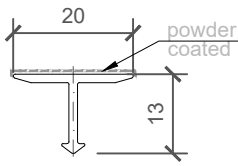


POS.	CODE	ELEMENTS	SCALE: M 1:2.5
1	P039	Fixing screw - The type of screw depends on the material of the substructure (wind load)	
2	A162	Decorative profile HF 64 - recessed look of transversal joint	
3	T121	Transversal gasket	
4	O1087	Dilatation flashing - internal	
5	A161	Load bearing fixing element HF 63 (wind load)	
6	O1088	Dilatation flashing - external	
7	K002	Blind rivet 4x10	

DILATATION

Trimo Group holds full copyrights on the information and details provided on this media, therefore any unauthorized reproduction and distribution is strictly prohibited.

2_ELEMENT_A162_Decorative profile HF 64

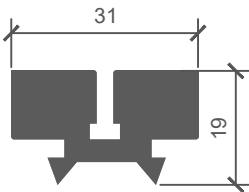


COLOUR	----
LENGHT_1	----
PIECES_1	----
LENGHT_2	----
PIECES_2	----

NOTES

material: EN AW-6061
Lmax = 4000 mm (6000 mm)

3_ELEMENT_T121_Transversal gasket

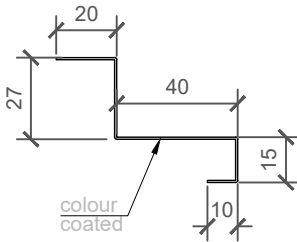


LENGHT_1	----
PIECES_1	----
LENGHT_2	----
PIECES_2	----

NOTES

material: EPDM

4_ELEMENT_O1087_Dilatation flashing - internal

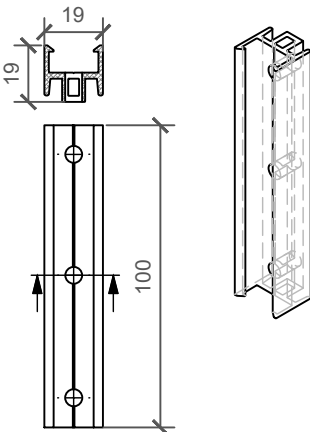


COLOUR	----
LENGHT_1	----
PIECES_1	----
LENGHT_2	----
PIECES_2	----

NOTES

material: Colored metal sheet (0,7 mm)
sheet width: 112 mm
Lmax = 6000 mm

5_ELEMENT_A161_Load bearing fixing element HF 63 (wind load)

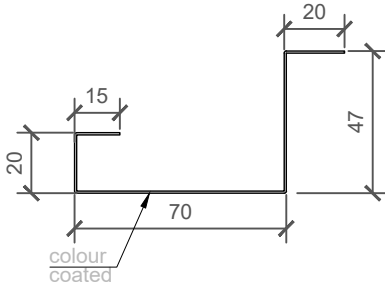


PIECES	----
--------	------

NOTES

material: EN AW-6063 T66
L= 100 mm

6_ELEMENT_O1088_Dilatation flashing - external



COLOUR	----
LENGHT_1	----
PIECES_1	----
LENGHT_2	----
PIECES_2	----

NOTES

material: Colored metal sheet (0,7 mm)
 sheet width: 172 mm
 Lmax = 6000 mm

**HORIZONTAL
INSTALLATION**

**QBISS
SCREEN H+**

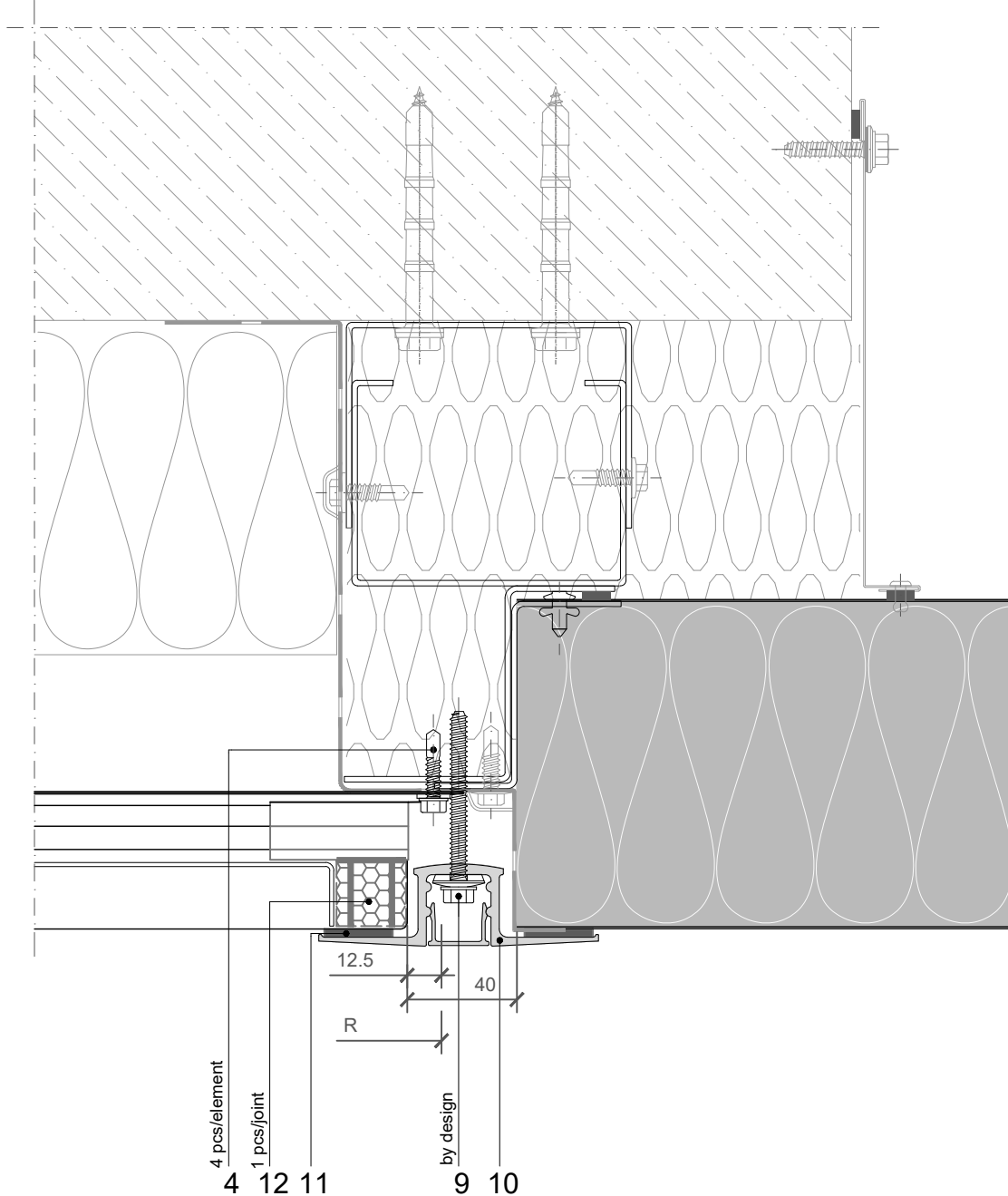
JOINT TYPE

- B - B ○ BF - BF
- B - BF ○ F - B
- BF - B ○ F - BF

BUILDING APPLICATION

- External Facade ○ External Soffit
- Internal Wall ○ Internal Ceiling

HORIZONTAL CUT



POS.	CODE	ELEMENTS	SCALE: M 1:2.5
4	P038	Fixing screw - The type of screw depends on the material of the substructure (self weight load)	
9	V024	Fixing screw - The type of screw depends on the material of the substructure	
10	A085	HF102/1 and HF102/2 aluminium fixing profile	
11	T003	EPDM sealing tape 6x25	
12	T022	EPDM seal 26/26x30 + mastic seal	

TRIMO SYSTEM CONNECTION

Trimo Group holds full copyrights on the information and details provided on this media, therefore any unauthorized reproduction and distribution is strictly prohibited.

**HORIZONTAL
INSTALLATION**

**QBISS
SCREEN H+**

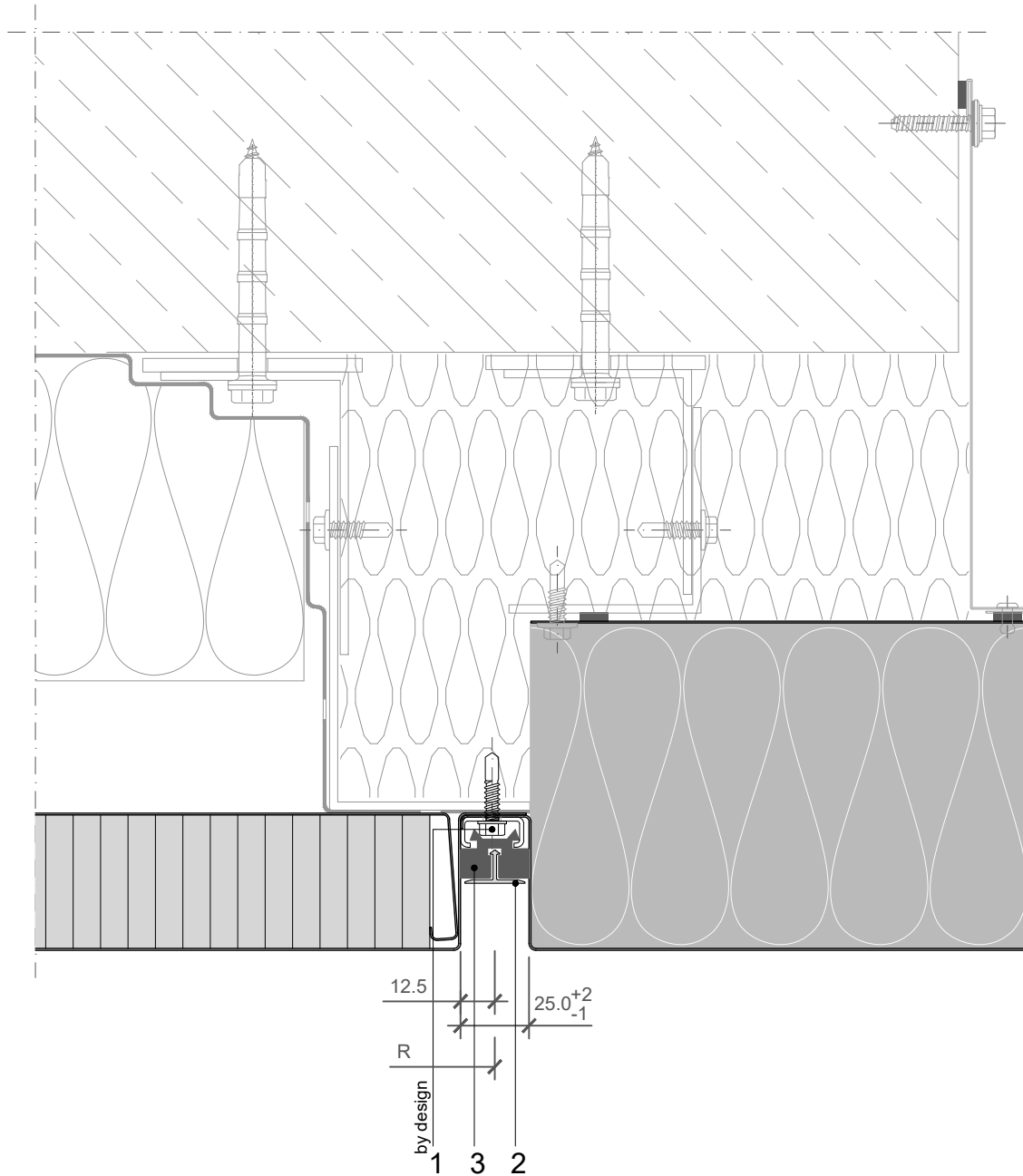
JOINT TYPE

- B - B ○ BF - BF
- B - BF ○ F - B
- BF - B ○ F - BF

BUILDING APPLICATION

- External Facade ○ External Soffit
- Internal Wall ○ Internal Ceiling

HORIZONTAL CUT



POS.	CODE	ELEMENTS	SCALE: M 1:2.5
1	P038	Fixing screw - The type of screw depends on the material of the substructure (wind load)	
13	A023	Decorative profile HF40 - recessed look of transversal joint	
14	T052	Transversal gasket	

TRIMO SYSTEM CONNECTION

Trimo Group holds full copyrights on the information and details provided on this media, therefore any unauthorized reproduction and distribution is strictly prohibited.

**HORIZONTAL
INSTALLATION**

**QBISS
SCREEN H+**

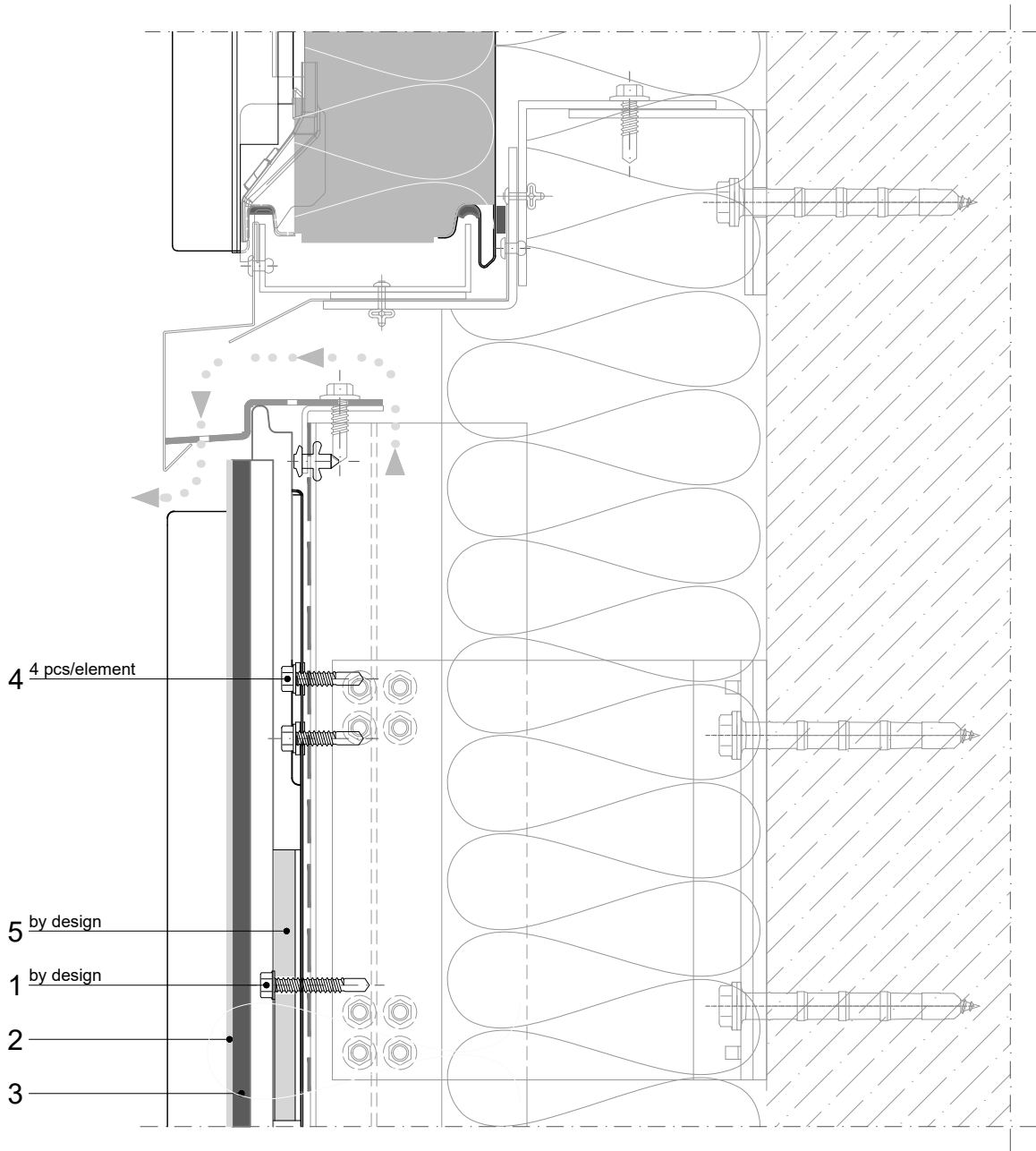
JOINT TYPE

- B - B ○ BF - BF
- B - BF ○ F - B
- BF - B ○ F - BF

BUILDING APPLICATION

- External Facade ○ External Soffit
- Internal Wall ○ Internal Ceiling

VERTICAL CUT



POS.	CODE	ELEMENTS	SCALE: M 1:2.5
1	P039	Fixing screw - The type of screw depends on the material of the substructure (wind load)	
2	A162	Decorative profile HF 64 - recessed look of transversal joint	
3	T121	Transversal gasket	
4	P038	Fixing screw - The type of screw depends on the material of the substructure (self weight load)	
5	A161	Load bearing fixing element HF 63 (wind load)	

HORIZONTAL INSTALLATION

QBISS SCREEN H+

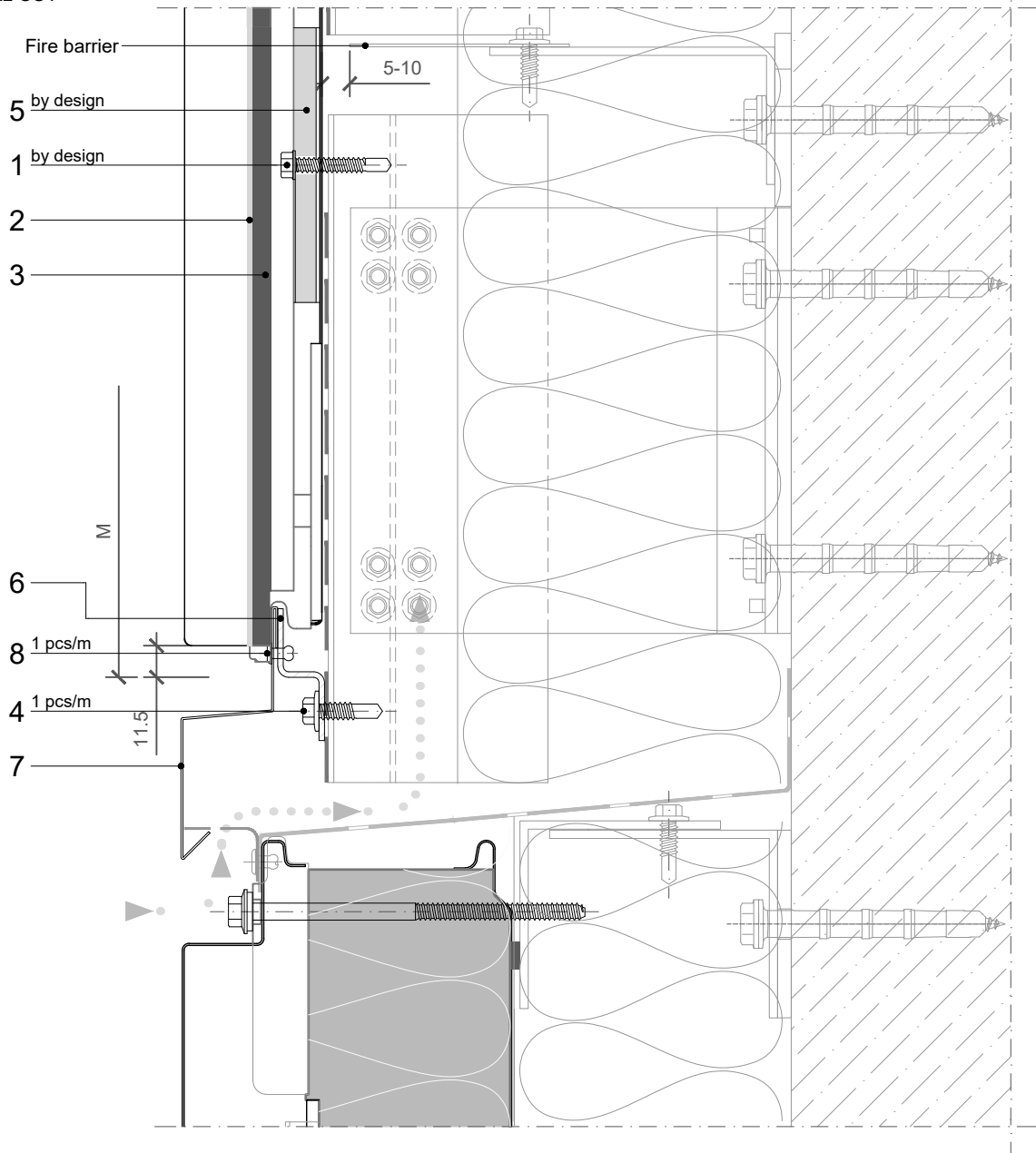
JOINT TYPE

- B - B ○ BF - BF
- B - BF ○ F - B
- BF - B ○ F - BF

BUILDING APPLICATION

- External Facade ○ External Soffit
- Internal Wall ○ Internal Ceiling

VERTICAL CUT



POS.	CODE	ELEMENTS	SCALE: M 1:2.5
1	P039	Fixing screw - The type of screw depends on the material of the substructure (wind load)	
2	A162	Decorative profile HF 64 - recessed look of transversal joint	
3	T121	Transversal gasket	
4	P038	Fixing screw - The type of screw depends on the material of the substructure	
5	A161	Load bearing fixing element HF 63 (wind load)	
6	N1273	Cladding element holder 2x25x17x25	
7	O1041	Drip flashing	
8	K002	Blind rivet 4x10	

**HORIZONTAL
INSTALLATION**

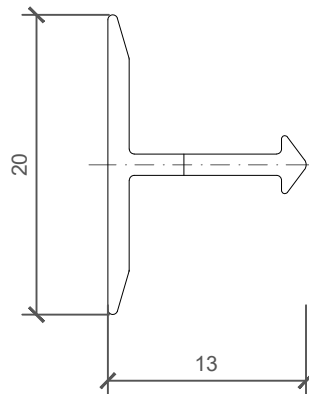
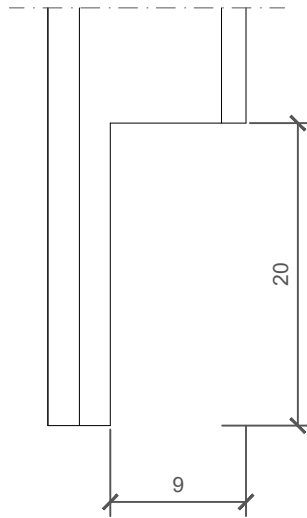
**QBISS
SCREEN H+**

JOINT TYPE

- B - B BF - BF
- B - BF F - B
- BF - B F - BF

BUILDING APPLICATION

- External Facade External Soffit
- Internal Wall Internal Ceiling

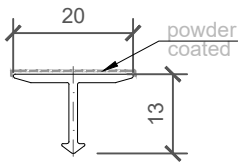


NOTES

- 2_ELEMENT_A162_Decorative profile HF 64 - mechanical treatment

SCALE: M 2:1

2_ELEMENT_A162_Decorative profile HF 64

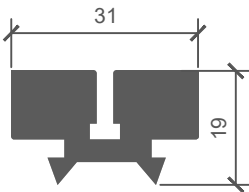


COLOUR	----
LENGHT_1	----
PIECES_1	----
LENGHT_2	----
PIECES_2	----

NOTES

material: EN AW-6061
Lmax = 4000 mm (6000 mm)

3_ELEMENT_T121_Transversal gasket

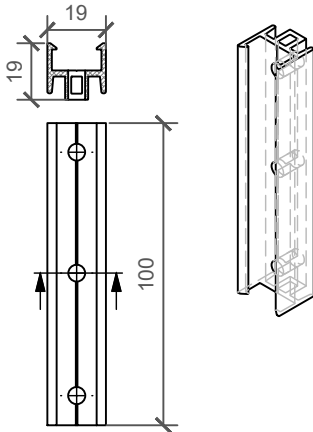


LENGHT_1	----
PIECES_1	----
LENGHT_2	----
PIECES_2	----

NOTES

material: EPDM

5_ELEMENT_A161_Load bearing fixing element HF 63 (wind load)

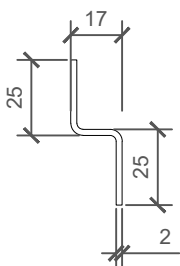


PIECES	----
---------------	------

NOTES

material: EN AW-6063 T66
L= 100 mm

5_ELEMENT_N1273_Cladding element holder 2x25x17x25

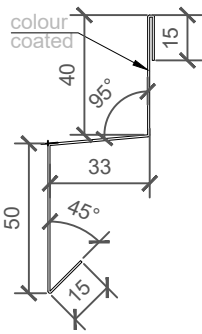


LENGHT_1	----
PIECES_1	----
LENGHT_2	----
PIECES_2	----

NOTES

material: Zinc - coated metal sheet (2 mm) / option: Stainless steel (2 mm)
sheet width: 59 mm

6_ELEMENT_O1401_Drip flashing

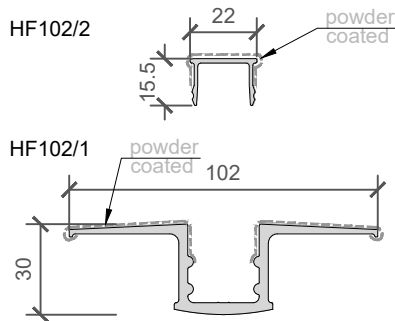


COLOUR	----
LENGHT_1	----
PIECES_1	----
LENGHT_2	----
PIECES_2	----

NOTES

material: Colored metal sheet (0,7 mm)
 sheet width: 153 mm
 Lmax = 6000 mm

10_ELEMENT_A085_HF102/1 and HF102/2 aluminium fixing profile

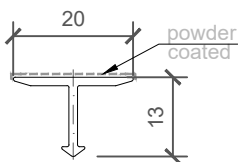


COLOUR	----
LENGHT_1	----
PIECES_1	----
LENGHT_2	----
PIECES_2	----

NOTES

material: EN AW--6060 T66
 Lmax = 4000 mm (6000 mm)

13_ELEMENT_A023_Decorative profile HF 40

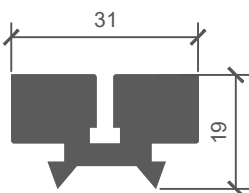


COLOUR	----
LENGHT_1	----
PIECES_1	----
LENGHT_2	----
PIECES_2	----

NOTES

material: EN AW-6061
 Lmax = 4000 mm (6000 mm)

14_ELEMENT_T052_Transversal gasket



LENGHT_1	----
PIECES_1	----
LENGHT_2	----
PIECES_2	----

NOTES

material: EPDM

**HORIZONTAL
INSTALLATION**

**QBISS
SCREEN H+**

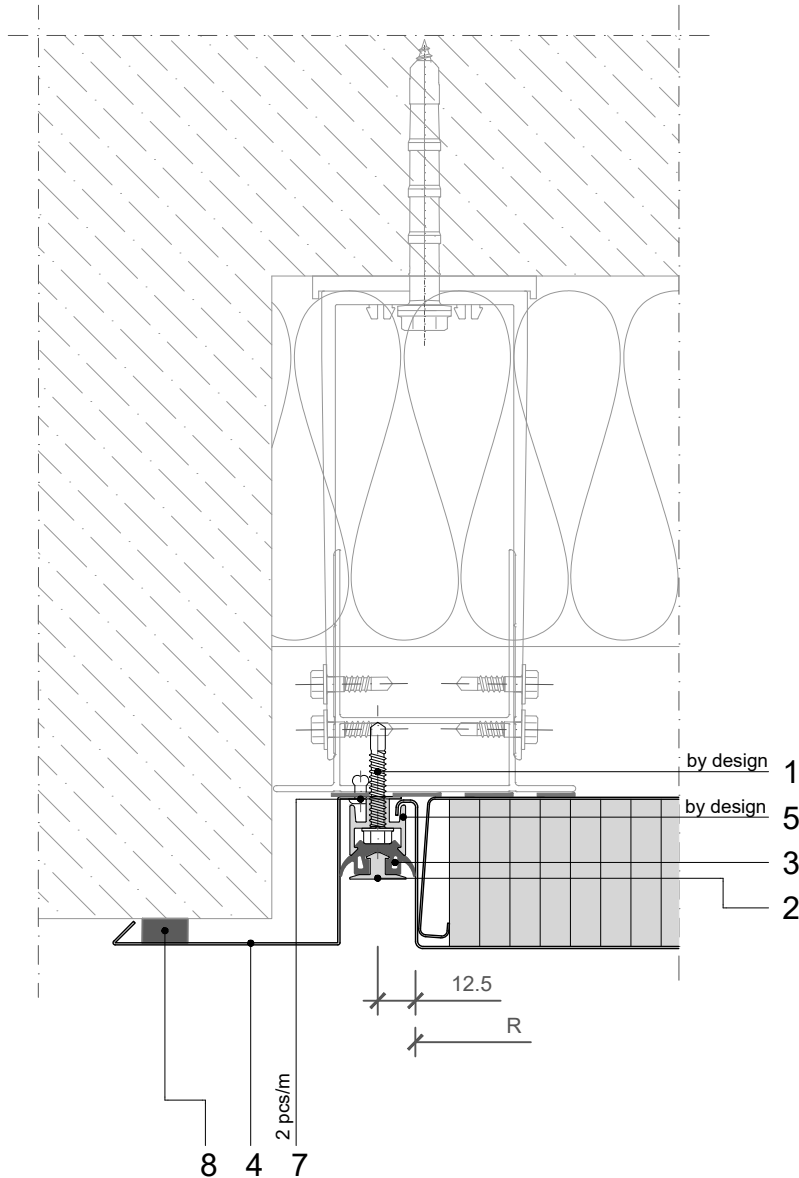
JOINT TYPE

- B - B ○ BF - BF
- B - BF ○ F - B
- BF - B ○ F - BF

BUILDING APPLICATION

- External Facade ○ External Soffit
- Internal Wall ○ Internal Ceiling

HORIZONTAL CUT



POS.	CODE	ELEMENTS	SCALE: M 1:2.5
1	P039	Fixing screw - The type of screw depends on the material of the substructure (wind load)	
2	A162	Decorative profile HF 64 - recessed look of transversal joint	
3	T121	Transversal gasket	
4	O1067	Flashing - Cover to the wall	
5	A161	Load bearing fixing element HF 63 (wind load)	
7	K002	Blind rivet 4x10	
8	T016	Pre-compressed sealing tape	

OTHER SYSTEM CONNECTION

Trimo Group holds full copyrights on the information and details provided on this media, therefore any unauthorized reproduction and distribution is strictly prohibited.

**HORIZONTAL
INSTALLATION**

**QBISS
SCREEN H+**

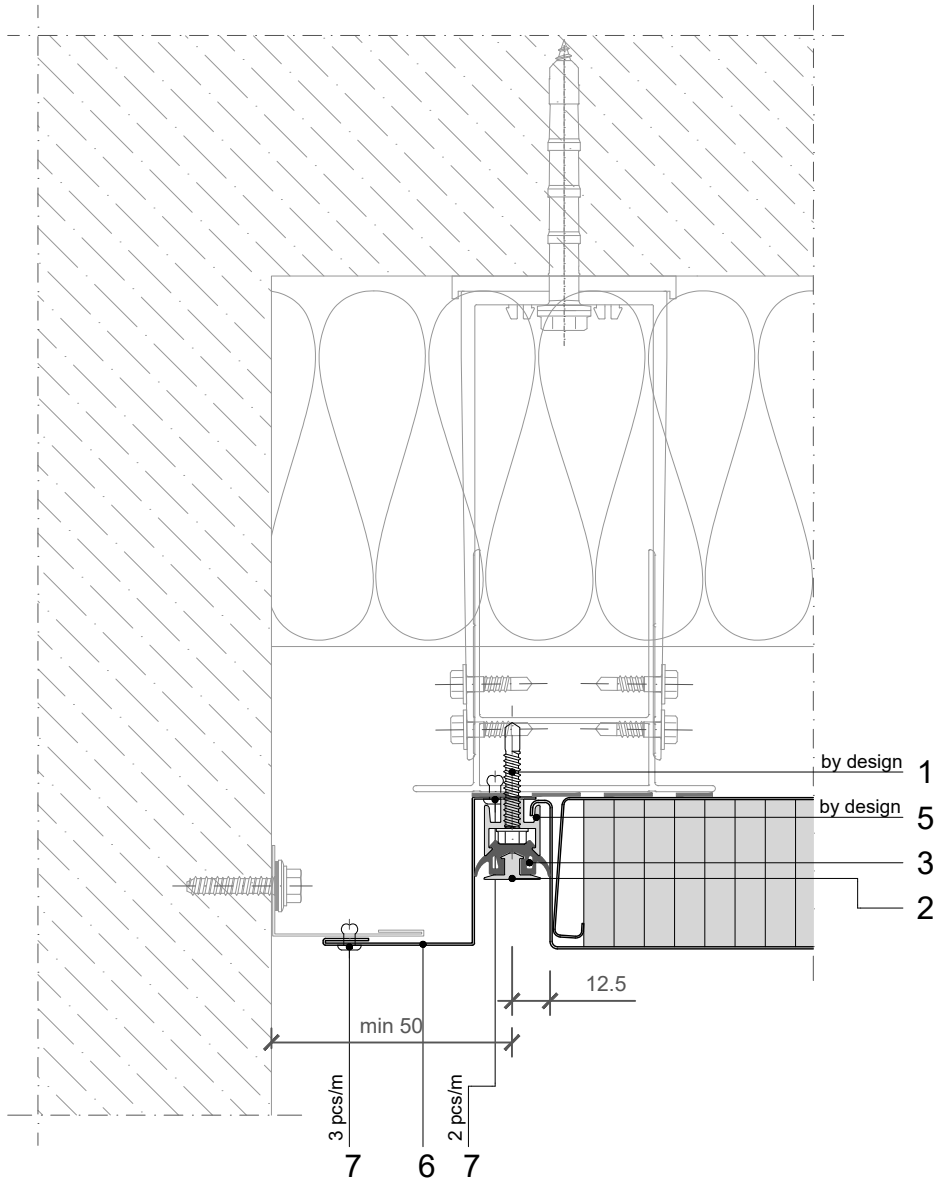
JOINT TYPE

- B - B ○ BF - BF
- B - BF ○ F - B
- BF - B ○ F - BF

BUILDING APPLICATION

- External Facade ○ External Soffit
- Internal Wall ○ Internal Ceiling

HORIZONTAL CUT

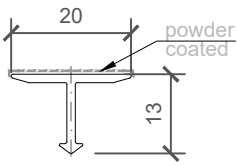


POS.	CODE	ELEMENTS	SCALE: M 1:2.5
1	P039	Fixing screw - The type of screw depends on the material of the substructure (wind load)	
2	A162	Decorative profile HF 64 - recessed look of transversal joint	
3	T121	Transversal gasket	
5	A161	Load bearing fixing element HF 63 (wind load)	
6	O1515	Flashing - Cover to the wall	
7	K002	Blind rivet 4x10	

OTHER SYSTEM CONNECTION

Trimo Group holds full copyrights on the information and details provided on this media, therefore any unauthorized reproduction and distribution is strictly prohibited.

2_ELEMENT_A162_Decorative profile HF 64

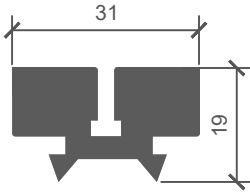


COLOUR	----
LENGHT_1	----
PIECES_1	----
LENGHT_2	----
PIECES_2	----

NOTES

material: EN AW-6061
Lmax = 4000 mm (6000 mm)

3_ELEMENT_T121_Transversal gasket

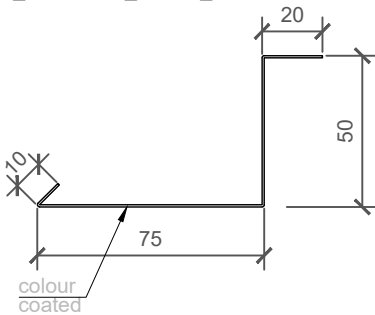


COLOUR	----
LENGHT_1	----
PIECES_1	----
LENGHT_2	----
PIECES_2	----

NOTES

material: EPDM

4_ELEMENT_O1067_Flashing - Cover to the wall

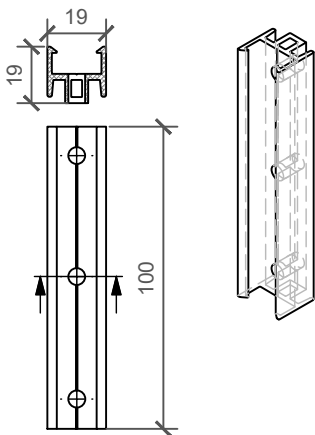


COLOUR	----
LENGHT_1	----
PIECES_1	----
LENGHT_2	----
PIECES_2	----

NOTES

material: Colored metal sheet (0,7 mm)
sheet width: 155 mm
Lmax = 6000 mm

5_ELEMENT_A161_Load bearing fixing element HF 63 (wind load)

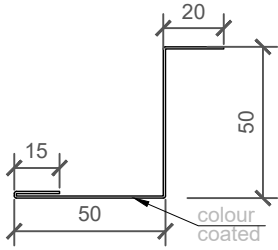


PIECES	----
---------------	------

NOTES

material: EN AW-6063 T66
L= 100 mm

6_ELEMENT_O1515_Flashing - Cover to the wall



COLOUR	----
LENGHT_1	----
PIECES_1	----
LENGHT_2	----
PIECES_2	----

NOTES

material: Colored metal sheet (0,7 mm)
 sheet width: 135 mm
 Lmax = 6000 mm

**HORIZONTAL
INSTALLATION**

**QBISS
SCREEN H+**

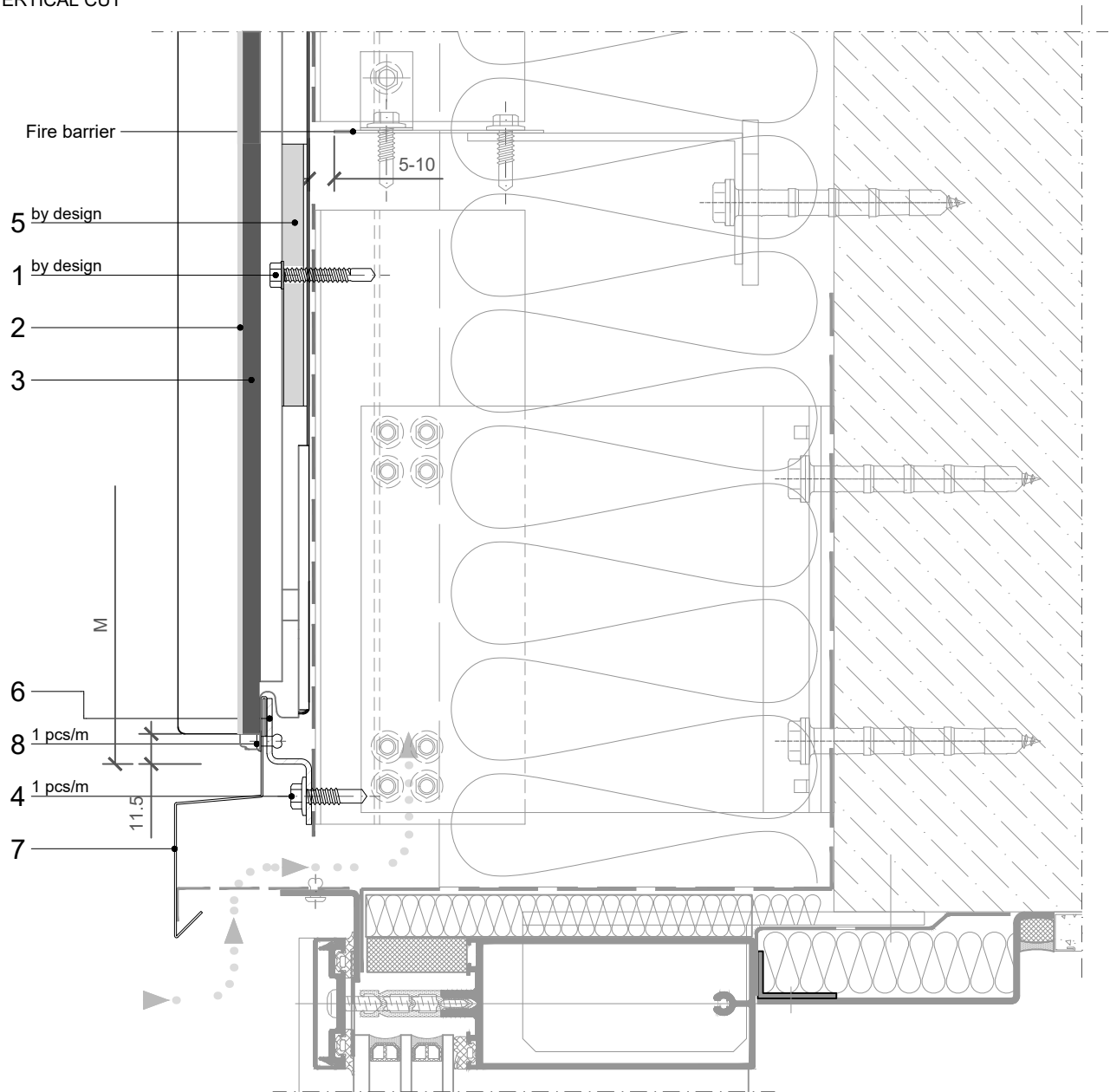
JOINT TYPE

- B - B ○ BF - BF
- B - BF ○ F - B
- BF - B ○ F - BF

BUILDING APPLICATION

- External Facade ○ External Soffit
- Internal Wall ○ Internal Ceiling

VERTICAL CUT



POS.	CODE	ELEMENTS	SCALE: M 1:2.5
1	P039	Fixing screw - The type of screw depends on the material of the substructure (wind load)	
2	A162	Decorative profile HF 64 - recessed look of transversal joint	
3	T121	Transversal gasket	
4	P038	Fixing screw - The type of screw depends on the material of the substructure	
5	A161	Load bearing fixing element HF 63 (wind load)	
6	N1273	Cladding element holder 2x25x17x25	
7	O1041	Drip flashing	
8	K002	Blind rivet 4x10	

OTHER SYSTEM CONNECTION

Trimo Group holds full copyrights on the information and details provided on this media, therefore any unauthorized reproduction and distribution is strictly prohibited.

**HORIZONTAL
INSTALLATION**

**QBISS
SCREEN H+**

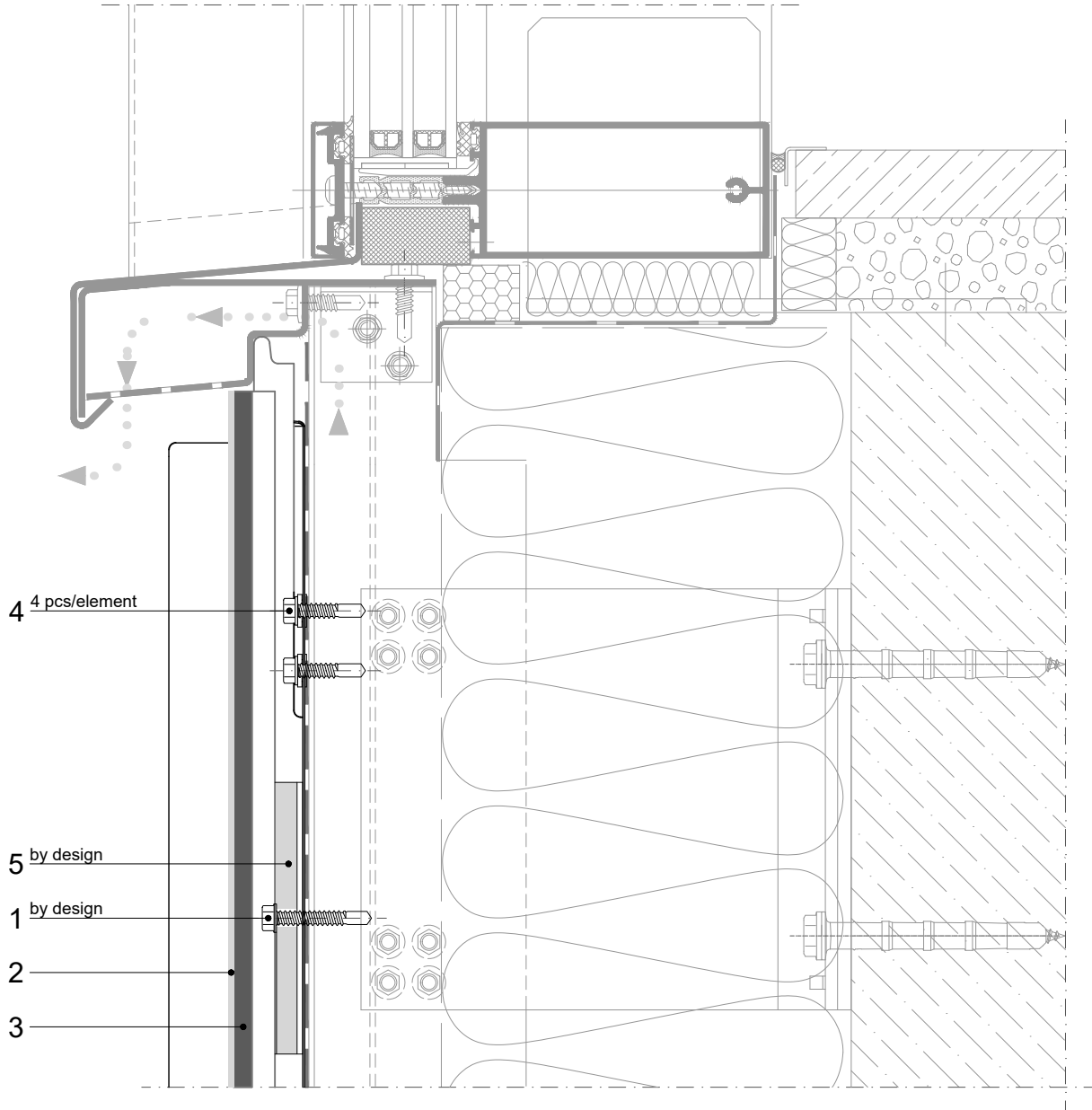
JOINT TYPE

- B - B ○ BF - BF
- B - BF ○ F - B
- BF - B ○ F - BF

BUILDING APPLICATION

- External Facade ○ External Soffit
- Internal Wall ○ Internal Ceiling

VERTICAL CUT



POS.	CODE	ELEMENTS	SCALE: M 1:2.5
1	P039	Fixing screw - The type of screw depends on the material of the substructure	
2	A162	Decorative profile HF 64 - recessed look of transversal joint	
3	T121	Transversal gasket	
4	P038	Fixing screw - The type of screw depends on the material of the substructure (self weight load)	
5	A161	Load bearing fixing element HF 63 (wind load)	

OTHER SYSTEM CONNECTION

Trimo Group holds full copyrights on the information and details provided on this media, therefore any unauthorized reproduction and distribution is strictly prohibited.

**HORIZONTAL
INSTALLATION**

**QBISS
SCREEN H+**

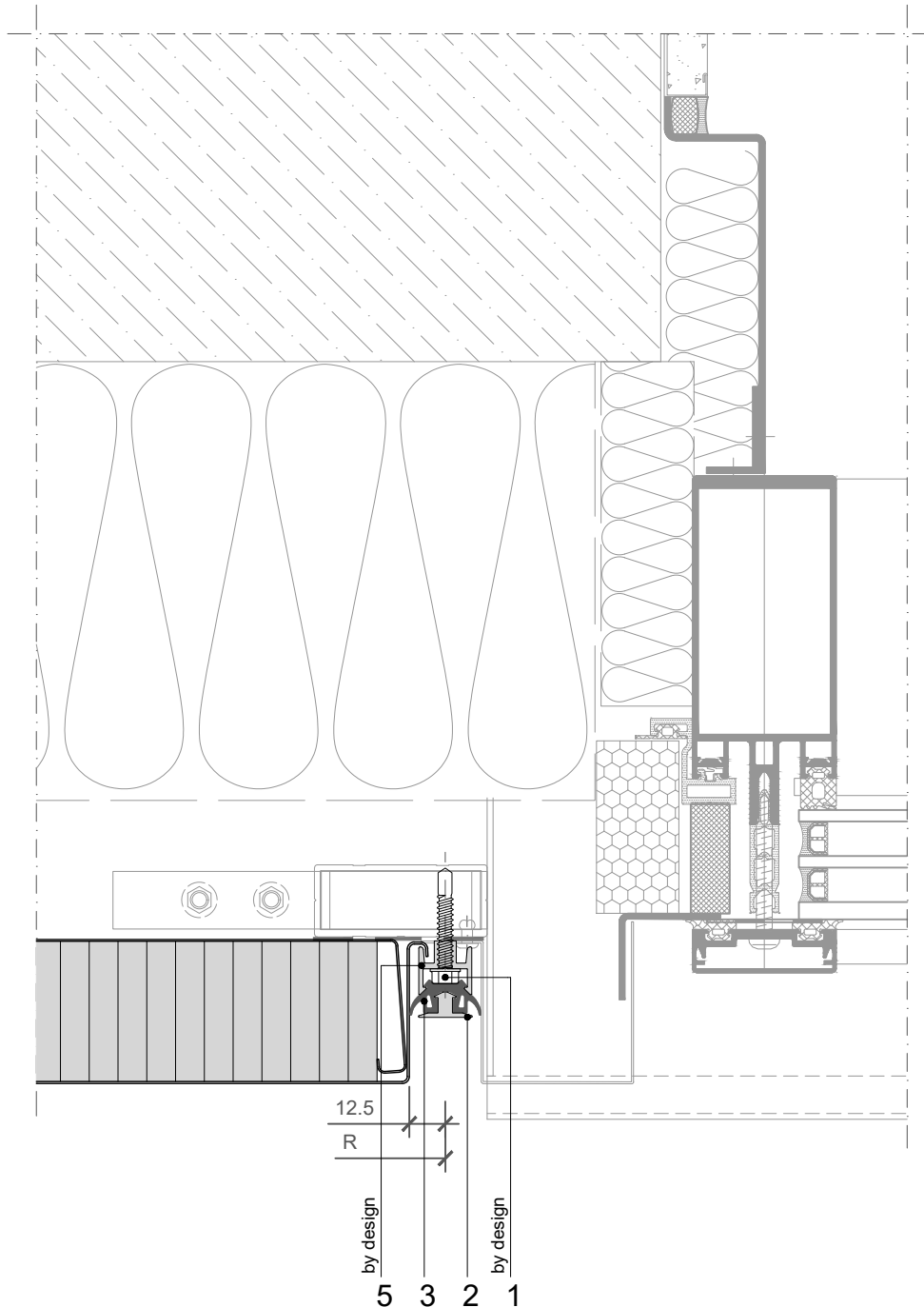
JOINT TYPE

- B - B ○ BF - BF
- B - BF ○ F - B
- BF - B ○ F - BF

BUILDING APPLICATION

- External Facade ○ External Soffit
- Internal Wall ○ Internal Ceiling

HORIZONTAL CUT



POS.	CODE	ELEMENTS	SCALE: M 1:2.5
1	P039	Fixing screw - The type of screw depends on the material of the substructure (wind load)	
2	A162	Decorative profile HF 64 - recessed look of transversal joint	
3	T121	Transversal gasket	
5	A161	Load bearing fixing element HF 63 (wind load)	

OTHER SYSTEM CONNECTION

Trimo Group holds full copyrights on the information and details provided on this media, therefore any unauthorized reproduction and distribution is strictly prohibited.

**HORIZONTAL
INSTALLATION**

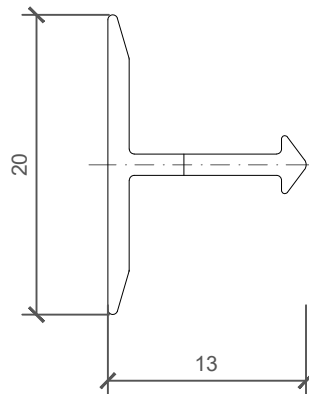
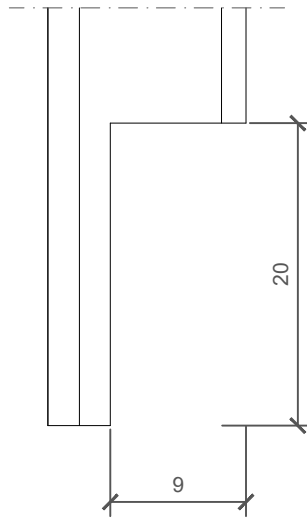
**QBISS
SCREEN H+**

JOINT TYPE

- B - B BF - BF
- B - BF F - B
- BF - B F - BF

BUILDING APPLICATION

- External Facade External Soffit
- Internal Wall Internal Ceiling

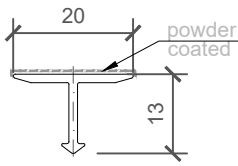


NOTES

- 2_ELEMENT_A162_Decorative profile HF 64 - mechanical treatment

SCALE: M 2:1

2_ELEMENT_A162_Decorative profile HF 64

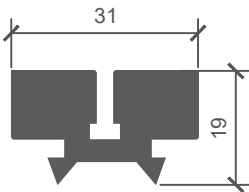


COLOUR	----
LENGHT_1	----
PIECES_1	----
LENGHT_2	----
PIECES_2	----

NOTES

material: EN AW-6061
Lmax = 4000 mm (6000 mm)

3_ELEMENT_T121_Transversal gasket

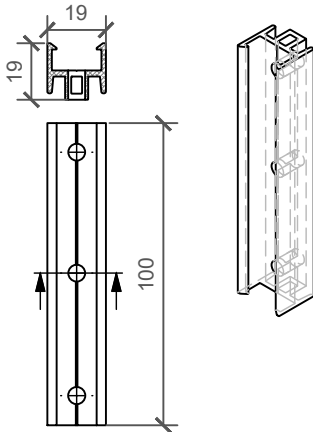


LENGHT_1	----
PIECES_1	----
LENGHT_2	----
PIECES_2	----

NOTES

material: EPDM

5_ELEMENT_A161_Load bearing fixing element HF 63 (wind load)

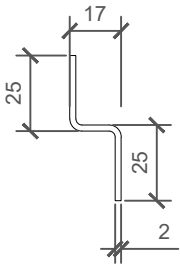


PIECES	----
---------------	------

NOTES

material: EN AW-6063 T66
L= 100 mm

6_ELEMENT_N1273_Cladding element holder 2x25x17x25

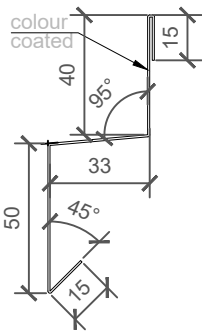


LENGHT_1	----
PIECES_1	----
LENGHT_2	----
PIECES_2	----

NOTES

material: Zinc - coated metal sheet (2 mm) / option: Stainless steel (2 mm)
sheet width: 59 mm

7_ELEMENT_O1401_Drip flashing



COLOUR	----
LENGHT_1	----
PIECES_1	----
LENGHT_2	----
PIECES_2	----

NOTES

material: Colored metal sheet (0,7 mm)
sheet width: 153 mm
Lmax = 6000 mm

TRIMO

TRIMO D.O.O.
PRIJATELJEVA CESTA 12
8210 TREBNJE | SLOVENIJA
T: +386 (0)7 34 60 200
F: +386 (0)7 34 60 127
E: TRIMO@TRIMO-GROUP.COM
W: WWW.TRIMO-GROUP.COM

Trimo Group holds full copyrights on the information and details provided on this media, therefore any unauthorized reproduction and distribution is strictly prohibited. Professional care has been taken to ensure that information/details are accurate, correct, complete and not misleading. However, Trimo (including its subsidiaries) does not accept responsibility or liability for errors or information which is found to be misleading. Information/details on this media are for general purposes only. Use of it is on your own initiative and responsibility for compliance with local laws is yours. Any deviations in details and project solutions are user responsibility. In no event, will Trimo be liable for any loss or damage including without limitation, indirect or consequential loss or damage, or any loss or damage whatsoever arising from loss profits arising out of or in connection with, the use of this media. All information issued by Trimo Group is subject to continuous development and information/details contained on this media are current at date of issue. It is user's responsibility to obtain most up-to-date information from Trimo when information/details are used for project.

The last version of the document is available on www.trimo-group.com. Latest version of published document in English language prevails over other translated language documents.

For information about the delivery of panels see Trimo's General conditions. <https://trimo-group.com/en/trimo/general-conditions-of-sale>